

0CNP2-M94500EN

Directions for the Parts Catalog.

- 1.The parts stipulated in this Parts Catalog are not necessarily standard equipped parts.
- 2.Parts may change without prior notice.
- 3.The following is an example of the Parts Catalog format.

REF.	LEV.	PARTSNo.	DESCRIPTION	QTY						I	R
				(A)	(B)	(C)	(D)	(E)	(F)		
1		729595-51390	FUEL INJECTION PUMP	1	1	1	1	1			
1-1	1	729595-51391	FUEL INJECTION PUMP	1	1	1	1	1			N
		(A=E00185) (B=E00200)									
3	2	26022-060162	SCREW M 6X16	9	9	9	9	9			
3-1	2	26022-060162	SCREW M 6X16	4	4	4	4	4			K
		(A=E00156) (B=E00156) (C=E00156) (D=E00156) (E=E00156)									
4	2	129470-51040	GAMSHIFT	9	9	9	9	9			
5	2	122710-51050	BEARING. ROLLER	9	9	9	9	9			
6	2	129470-51060	RETAINER	9	9	9	9	9			

Remarks	
(1)	BOOST COMPEMSATOR TYPE. OPTIONAL PART. TO E/#00155 (4JH-DT, 4JH-DTZ)

①Ref. No.

The Ref. No. listed may not be in accordance with the illustration Ref. No.

(Ex.) Illustration No. List Ref No.

1 1 (Before change) → 1-1 (After change)

For interchangeable symbols N, R and K, illustrations for new parts may be abbreviated.

②Lev. (Level)

Level indication

The numbers below indicate the level of relativity towards the main part.

- 1 ---- Main parts (Assembly parts)
- 2 ---- Sub component included in " 1 ".
- 3 ---- Sub component included in " 2 ".

Note) Parts that are not for sale are partially illustrated but not listed.

③Change Mark

The "I" indicates parts that were newly changed.

④Interchangeability Mark

When a part change takes place, one of the following interchangeability symbols is indicated beside the part.

Symbol	Interchangeability	Contents note
N	Old $\begin{matrix} \leftarrow \text{Yes} \\ \text{No} \rightarrow \end{matrix}$ New	New Part is interchangeable for Old Part but Old Part is not interchangeable for New Part.
Q	Old $\begin{matrix} \leftarrow \text{No} \\ \text{Yes} \rightarrow \end{matrix}$ New	New Part is not interchangeable for Old Part but Old Part is interchangeable for New Part.
R	Old $\begin{matrix} \leftarrow \text{Yes} \\ \text{Yes} \rightarrow \end{matrix}$ New	New/ Old Parts are both interchangeable.
S	Old $\begin{matrix} \leftarrow \text{No} \\ \text{No} \rightarrow \end{matrix}$ New	New/ Old Parts are both not interchangeable.
W		Part discontinued.
Z		Part newly added.
F		Not interchangeable by a single part but interchangeable together with related parts.
K		Changes only for used parts quantities.

⑤Effective Machine No.

When a part changes, the effective Machine No. will be indicated in the (A)-(F) column.

Product Symbol	Product No.	Product Symbol	Product No.
C	Clutch No. Compressor No.	F	Machine No. (Agricultural Equip.)
D	Drive No.	M	Machine No.
E	Engine No.	Note 1)	Date

Note 1) A date may follow the symbol. (Ex.) 1996.01

Note 2) " XXX " are for parts that could not be predicted or for engine models that could not be identified.

Note 3) (A=E/#00185) is the E/# (Engine Serial Number) for the column (A) model (in this case 4JH-DT) after the parts design change.

⑥Remarks Mark

Figures or alphabets (symbols) are entered in the remarks column.

The comments (remarks) on parts that are indicated at the bottom of the illustration are the same symbols as those stated above.

Corresponding table of the machine and engine

Machine			Engine	
Model	Part Catalog No.	Serial No.	Model	Part Catalog No.
MCG95	0CNP2-G9450	~F026284	GA120E-SCKM	0CNP2-G63100
		F026285~	GA120E-SCKM1	0CNP5-G14000
		F026876~	GA120E-ASCKM	0CNP5-G14100

Contents

Fig. No. Fig. Name

PULLEY & TENSION SECTION

1. TENSION ARM
2. PULLEY

FRAME SECTION

3. BODY FRAME

TRAVELING SECTION

4. IDLER
5. TRACK ROLLER
6. TRANSMISSION CASE
7. INPUT SHAFT
8. 2ND SHAFT
9. SIDE CLUTCH SHAFT
10. AXLE
11. BRAKE
12. SIDE CLUTCH
13. MAIN CHANGE

CONTROL SECTION

14. HANDLE
15. TRAVEL LEVER
16. BRAKE LEVER
17. MAIN CHANGE LEVER
18. SIDE CLUTCH LEVER

Fig. No. Fig. Name

PLATFORM CARRIER SECTION

19. PLATFORM CARRIER

TOOLS,ACCESSORIES & LABELS SEC

20. LABELS
21. TOOLS & ACCESSORIES

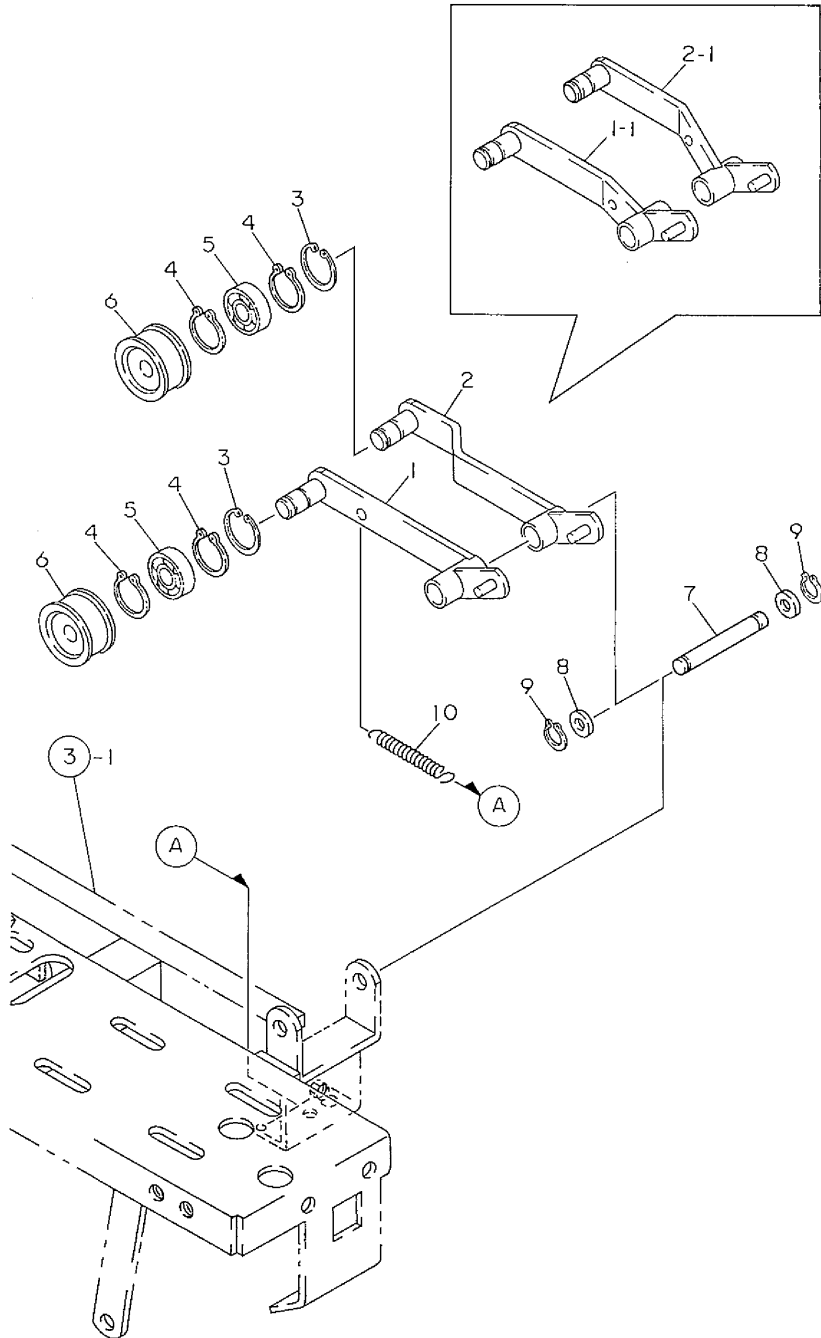
CONTROL SECTION

22. DEADMAN LEVER(ADD.ITEM

TOOLS,ACCESSORIES & LABELS SEC

23. LABELS(ADD.ITEM

Fig.1. TENSION ARM

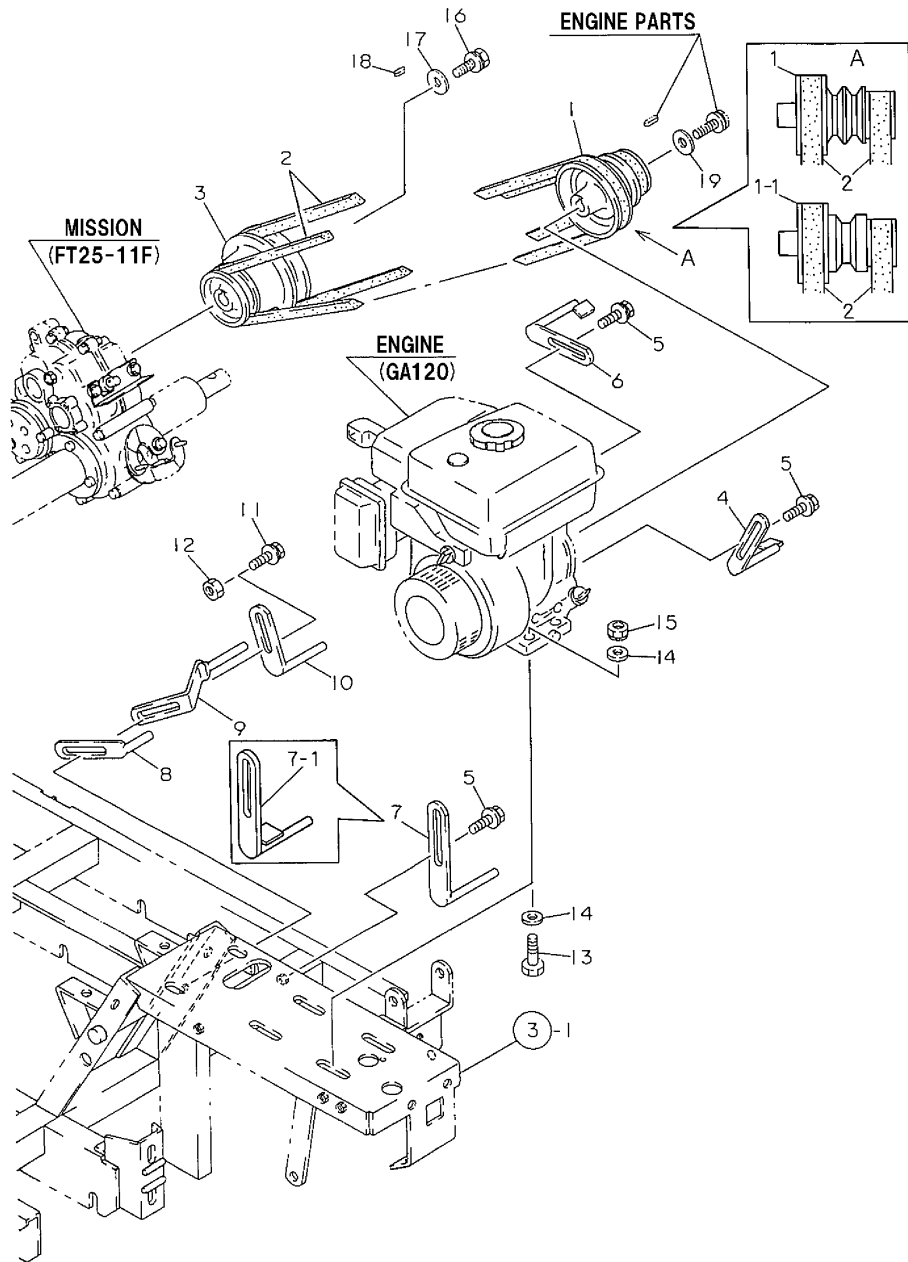


(A)=MCG95(-PQ(R
(B)=MCG95(-PQ(MC
(C)=

(D)=
(E)=
(F)=

No.	Lev.	Parts No.	Description	Q'ty						I	R
				(A)	(B)	(C)	(D)	(E)	(F)		
1	1	1N3500-22030	ARM, TENSION	1							
1-1	1	1N3500-22031	ARM, TENSION	1	1						S
(A=F010099)											
2	1	1N3500-22040	ARM B, TENSION	1							
2-1	1	1N3500-22041	ARM B, TENSION	1	1						S
(A=F010099)											
3	1	22252-000350	RING, 35	2	2						
4	1	22242-000150	RING, 15	4	4						
5	1	24104-062024	BEARING, BALL 6202UU	2	2						
6	1	1N1430-22070	ROLLER, TENSION	2	2						
7	1	1N1460-41040	SHAFT	1	1						
8	1	22137-160000	WASHER, 16	2	2						
9	1	22242-000160	RING, 16	2	2						
10	1	1N1190-45000	SPRING 11X72.5, TENS.	2	2						

Fig.2. PULLEY



(A)=MCG95(-PQ(R)
 (B)=MCG95(-PQ(MC)
 (C)=

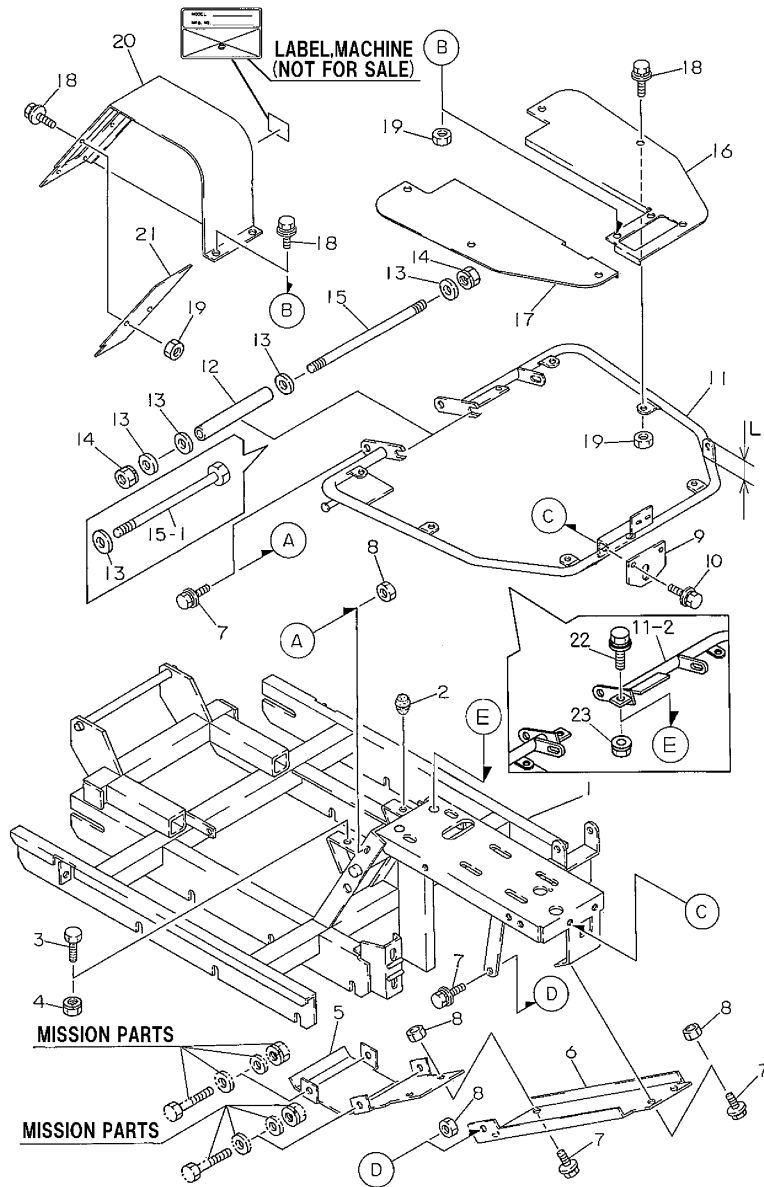
(D)=
 (E)=
 (F)=

No.	Lev.	Parts No.	Description	Qty						I	R
				(A)	(B)	(C)	(D)	(E)	(F)		
1	1	1N3500-21000	PULLEY,ENGINE	1							
1-1	1	1N3500-21001	PULLEY,ENGINE	1	1						S
(A=F016338)											
2	1	25123-003101	V-BELT, B31H	2	2						
3	1	1N1297-21010	PULLEY,TRANSMISSION	1	1						
4	1	1N3500-22000	GUIDE A 70X100,BELT	1	1						
5	1	26018-080164	BOLT M 8X 16	3	3						
6	1	1N3500-22010	GUIDE B 70X100,BELT	1	1						
7	1	1N1272-22110	GUIDE 12X150,BELT	1							
7-1	1	1N3500-22090	BELT GUIDE	1	1						S
(A=F014539)											
8	1	1N1291-22020	GUARD 40,BELT	1	1						
9	1	1N3500-22020	GUIDE C,BELT	1	1						
10	1	1N1270-22080	GUIDE 80,BELT	1	1						
11	1	26018-080254	BOLT M 8X 25	1	1						
12	1	26367-080002	NUT, M8	1	1						
13	1	26116-080452	BOLT, M8X 45 PLATED	4							
13-1	1	26106-080452	BOLT, M8X 45 PLATED	4	4						N
(A=FXXXXXX)											
14	1	22137-080000	WASHER, 8	8	8						
15	1	26051-080002	NUT, M8	4	4						
16	1	26016-060164	BOLT 6X16 W/L.W.	1	1						
17	1	1N1240-21040	WASHER	1	1						
18	1	22550-050251	KEY, 5X 25	1	1						
19	1	1N1185-42120	WASHER 9X25X3.2	1	1						

Fig.3. BODY FRAME

(A)=MCG95(-PQ(R
(B)=MCG95(-PQ(MC
(C)=

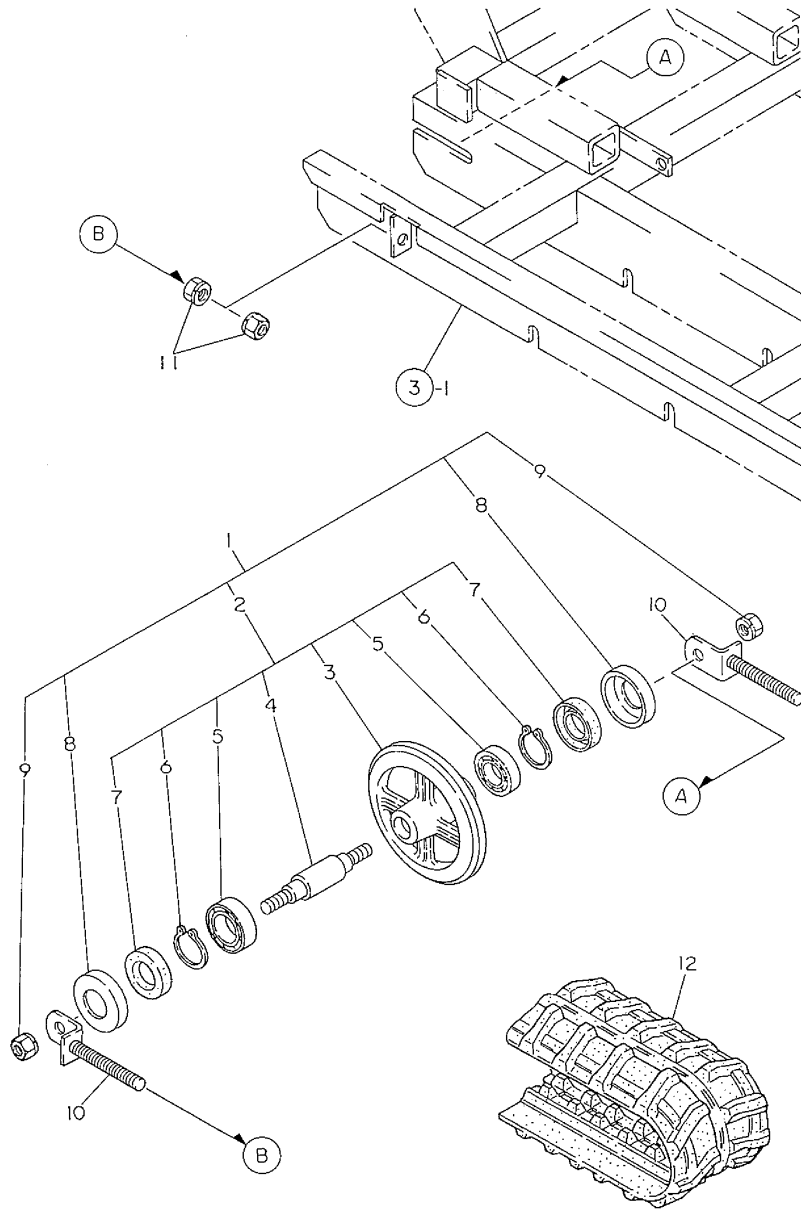
(D)=
(E)=
(F)=



No.	Lev.	Parts No.	Description	Qty						I	R
				(A)	(B)	(C)	(D)	(E)	(F)		
1	1	1N3500-31000	FRAME,BODY	1	1						
2	1	1N1101-44040	RUBBER,STOPPER	1	1						
3	1	26117-100254	BOLT, M10X 25 PLATED	1	1						
4	1	26051-100002	NUT, M10	1	1						
5	1	1N3500-58130	PROTECTOR	1							
5-1	1	1N3500-58530	PROTECTOR	1	1						S
(A=F024509)											
6	1	1N3500-58160	GUARD,UNDER	1							
6-1	1	1N3500-58161	GUARD,UNDER	1	1						S
(A=F024509)											
7	1	26018-080204	BOLT M 8X 20	7	7						
8	1	26367-080002	NUT, M8	7	7						
9	1	1N3500-41040	GUIDE B,CHANGE	1							Z
(A=F011099)											
10	1	26018-080254	BOLT M 8X 25	2							Z
(A=F011099)											
11	1	1N3500-54000	STEP	1							
11-1	1	1N3500-54001	STEP	1							S 1
(A=F011099)											
11-2	1	1N3500-54002	STEP	1	1						S
(A=F018557)											
12	1	1N1550-54100	PIPE (C)	1							Z
(A=F018557)											
13	1	22137-100000	WASHER, 10	4							Z
(A=F018557)											
14	1	26051-100002	NUT, M10	2							
14-1	1	26051-100002	NUT, M10	1							K
(A=F011099)											
14-2	1	26051-100002	NUT, M10	1							Z
(A=F018557)											
15	1	1N3500-54090	BOLT,STAY	1							
15-1	1	26117-101902	BOLT, M10X190 PLATED	1							S
(A=F011099)											
15-2	1	26117-101902	BOLT, M10X190 PLATED	1							Z
(A=F018557)											
16	1	1N3500-54070	STEP L	1	1						
17	1	1N3500-54080	STEP R	1	1						
18	1	1N1291-58080	BOLT 6X16 W/P&SW.	12	12						
19	1	26367-060002	NUT, M6	10	10						
20	1	1N3500-58040	COVER,PULLEY	1	1						
21	1	1N3500-58070	COVER D,PULLEY	1	1						
22	1	26018-080204	BOLT M 8X 20	2	2						W
(A=F018557)											
23	1	26367-080002	NUT, M8	2	2						W
(A=F018557)											

Remarks
(1) REF. NO.11 L=28, NO11-1 L=38 MM

Fig.4. IDLER

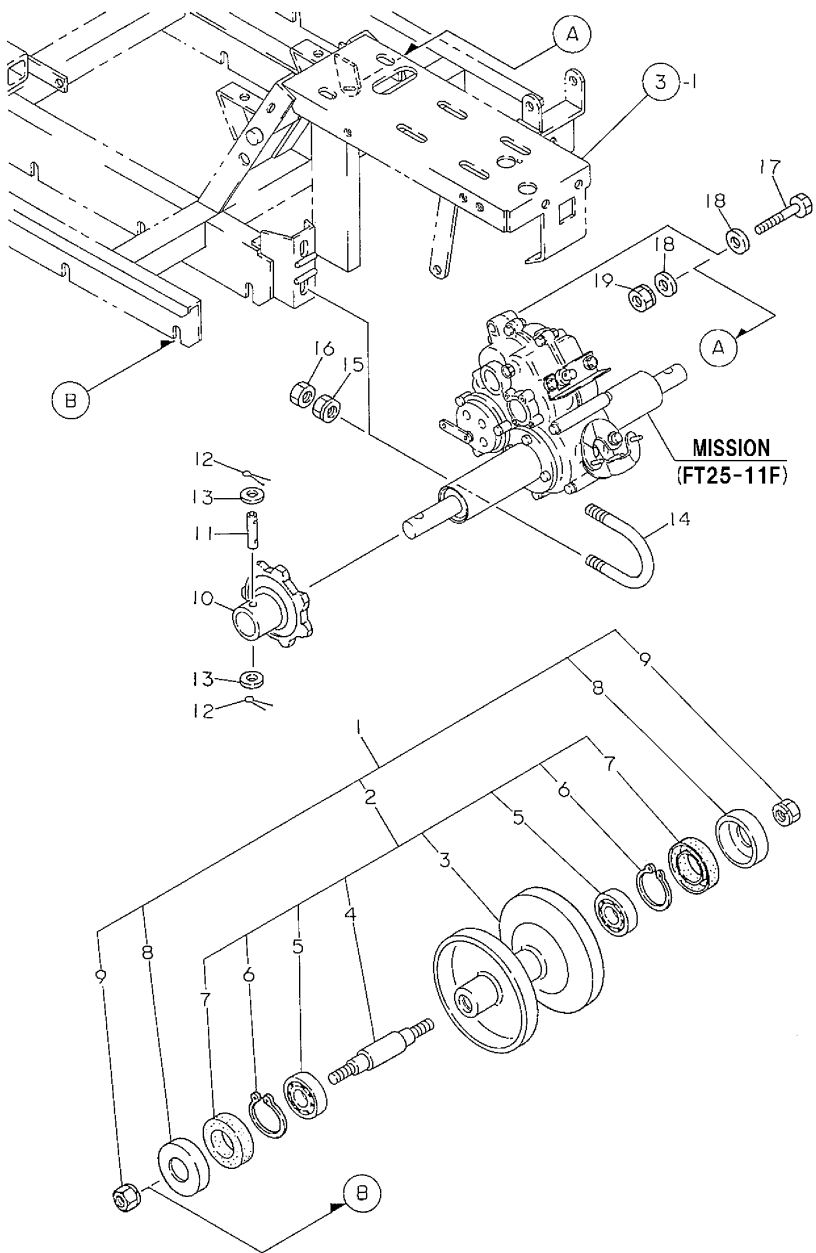


(A)=MCG95(-PQ(R
(B)=MCG95(-PQ(MC
(C)=

(D)=
(E)=
(F)=

No.	Lev.	Parts No.	Description	Q'ty						I	R
				(A)	(B)	(C)	(D)	(E)	(F)		
1	1	7N1292-35010	FLOAT RING SET	2	2						
2	2	7N1292-35000	FLOAT RING ASSY.	2	2						
3	3	1N1292-35000	RING,FLOAT	2	2						
4	3	1N1292-35010	SHAFT	2	2						
5	3	24101-060034	BEARING, BALL 6003	4	4						
6	3	22242-000170	RING, 17	4	4						
7	3	24421-173508	SEAL, OIL TC173508	4	4						
8	2	1N1091-36000	COVER,OIL SEAL	4	4						
9	2	26051-120002	NUT, M12	4	4						
10	1	1N1291-37000	SCREW,ADJUST	4	4						
11	1	26051-120002	NUT, M12	8	8						
12	1	1N3500-37000	CRAWLER 180X60X35,RB	2	2						

Fig.5. TRACK ROLLER

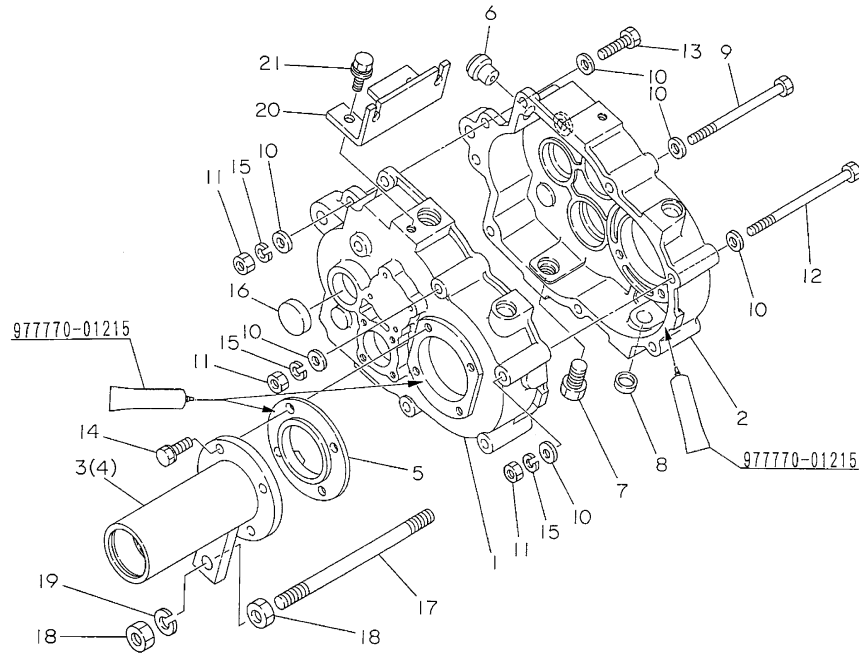


(A)=MCG95(-PQ(R)
 (B)=MCG95(-PQ(MC)
 (C)=

(D)=
 (E)=
 (F)=

No.	Lev.	Parts No.	Description	Q'ty						I	R
				(A)	(B)	(C)	(D)	(E)	(F)		
1	1	7N1292-36010	LWR.TRANK ROLLER SET	6	6						
2	2	7N1292-36000	LWR.TRANK ROLLER ASY	6	6						
3	3	1N1292-36000	ROLLER,LOWER TRANK	6	6						
4	3	1N1292-35010	SHAFT	6	6						
5	3	24101-060034	BEARING, BALL 6003	12	12						
6	3	22242-000170	RING, 17	12	12						
7	3	24421-173508	SEAL, OIL TC173508	12	12						
8	2	1N1091-36000	COVER,OIL SEAL	12	12						
9	2	26051-120002	NUT, M12	12	12						
10	1	1N1291-35000	SPROCKET	2	2						
11	1	1N1296-35000	PIN,SPROCKET	2	2						
12	1	22417-250250	PIN, COTTER 2.5X25	4	4						
13	1	22137-100000	WASHER, 10	4	4						
14	1	1N1210-35100	U-BOLT	2							
14-1	1	1N3501-35030	U-BOLT	2	2						R
		(A=F018307)									
15	1	26052-100002	NUT, M10	4	4						
16	1	26757-100002	NUT, LOCK M10	4	4						
17	1	26117-100702	BOLT M10X 70 PLATED	1	1						
18	1	22137-100000	WASHER, 10	2	2						
19	1	26051-100002	NUT, M10	1	1						

Fig.6. TRANSMISSION CASE



(A)=MCG95(-PQ(R)
 (B)=MCG95(-PQ(MC)
 (C)=

(D)=
 (E)=
 (F)=

No.	Lev.	Parts No.	Description	Q'ty						I	R
				(A)	(B)	(C)	(D)	(E)	(F)		
1	1	1N3500-24000	CASE L, TRANSMISSION	1							
2	1	1N3500-24010	CASE R, TRANSMISSION	1							
2-1	1	1N3500-24011	CASE R, TRANSMISSION	1							S 1
(A=F012411)											
3	1	1N1296-24001	HOLDER, AXLE	1							
4	1	1N3500-24020	HOLDER, AXLE	1							
5	1	1N1296-24013	PAWL, CLUTCH	2							
6	1	1N1291-24030	PLUG, OIL	1							
6-1	1	1N1291-24070	PLUG, HOLED OIL	1							S
(A=F015946)											
7	1	1N1291-24040	PLUG M14, DRAIN	1							
7-1	1	1N1530-24230	PLUG PT1/4	1							S
(A=F012411)											
8	1	1N1430-24080	CAP, SEAL	2							
9	1	26117-081102	BOLT M 8X110 PLATED	2							
10	1	22137-080000	WASHER, 8	16							
11	1	26717-080002	NUT, M8	8							
12	1	26117-081202	BOLT M 8X120 PLATED	2							
13	1	26117-080302	BOLT M 8X 30	4							
14	1	26016-080204	BOLT M 8X 20	8							
15	1	22217-080000	WASHER, SPRING 8	8							
16	1	1N1430-24000	PLUG, BLIND	1							
17	1	1N1296-24020	SCREW M12X180	1							
18	1	26717-120002	NUT, M12	4							
19	1	22217-120000	WASHER, SPRING 12	2							
20	1	1N3500-24030	BRACKET, OUTER	1							
21	1	26018-080164	BOLT M 8X 16	2							

Remarks

*7N3500-20000 TRANSMISSION ASSY.
 (1) REF. NO.2 IS A DRAIN PLUG WITH
 HOLD OF M14 WHILE REF. NO.2-1 IS
 A DRAIN PLUG PT 1/4.

Fig.7. INPUT SHAFT

(A)=MCG95(-PQ(R
 (B)=MCG95(-PQ(MC
 (C)=
 (D)=
 (E)=
 (F)=

No.	Lev.	Parts No.	Description	Q'ty						I	R
				(A)	(B)	(C)	(D)	(E)	(F)		
1	1	1N1291-25310	SHAFT KW2,INPUT	1							
2	1	1N3500-25000	GEAR 16X19	1							
3	1	24421-173007	SEAL, OIL TC173007	1							
4	1	24101-060034	BEARING, BALL 6003	1							
5	1	1N1430-25090	COLLAR	1							
6	1	24101-062024	BEARING, BALL 6202	1							

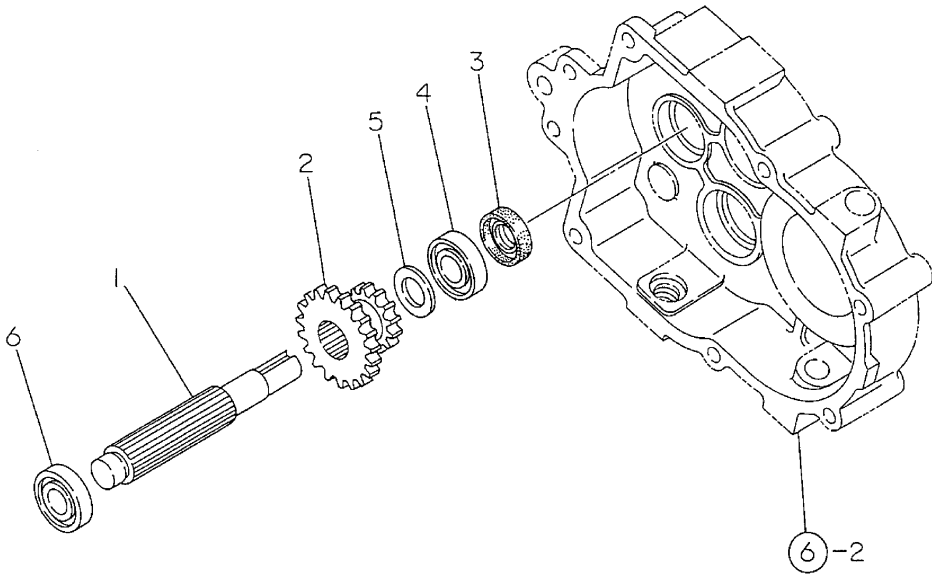


Fig.8. 2ND SHAFT

(A)=MCG95(-PQ(R)
 (B)=MCG95(-PQ(MC)
 (C)=

(D)=
 (E)=
 (F)=

No.	Lev.	Parts No.	Description	Q'ty						I	R
				(A)	(B)	(C)	(D)	(E)	(F)		
1	1	1N1296-25000	SHAFT,2ND	1							
2	1	1N1296-25010	GEAR 33	1							
3	1	1N1296-25020	GEAR 41	1							
4	1	1N3500-25010	GEAR 38	1							
5	1	1N1291-25040	GEAR 16	1							
6	1	24101-062034	BEARING, BALL 6203	2							
7	1	1N1291-25050	COLLAR 20.5X26X11	1							
8	1	1N1291-25060	COLLAR 20.2X27.2X33	1							
9	1	1N1430-25090	COLLAR	2							
10	1	24421-173507	SEAL, OIL TC173507	1							

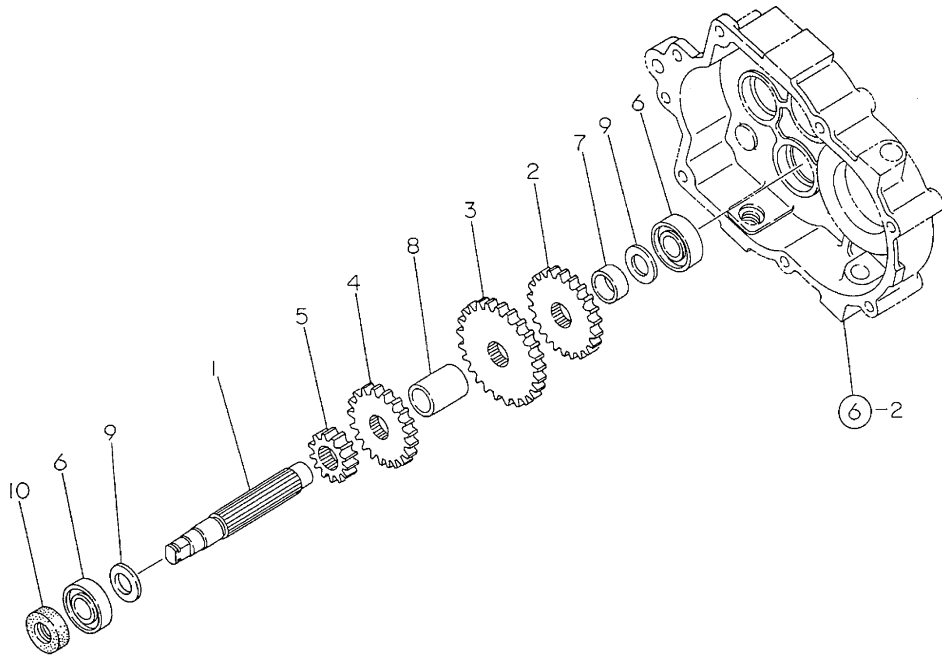
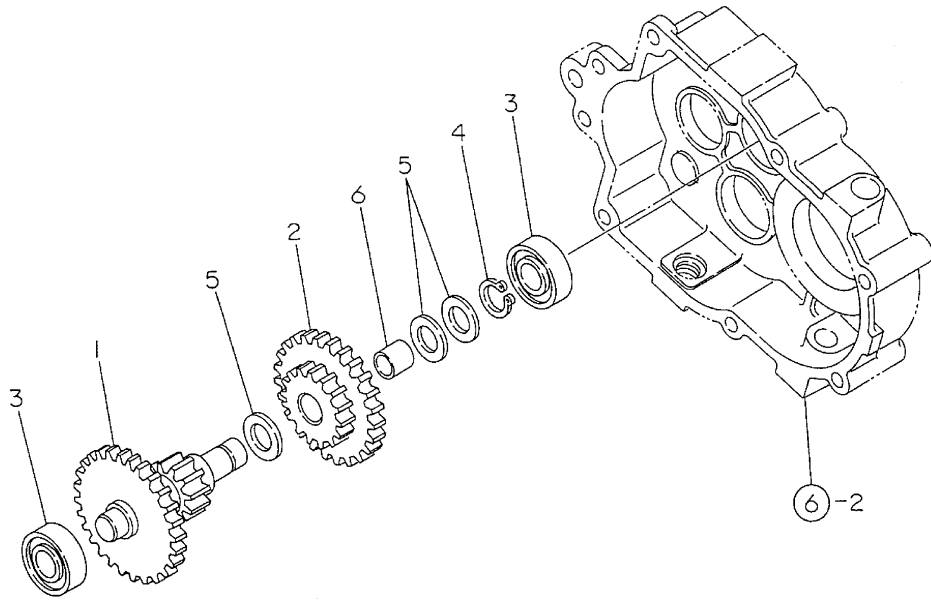


Fig.9. SIDE CLUTCH SHAFT

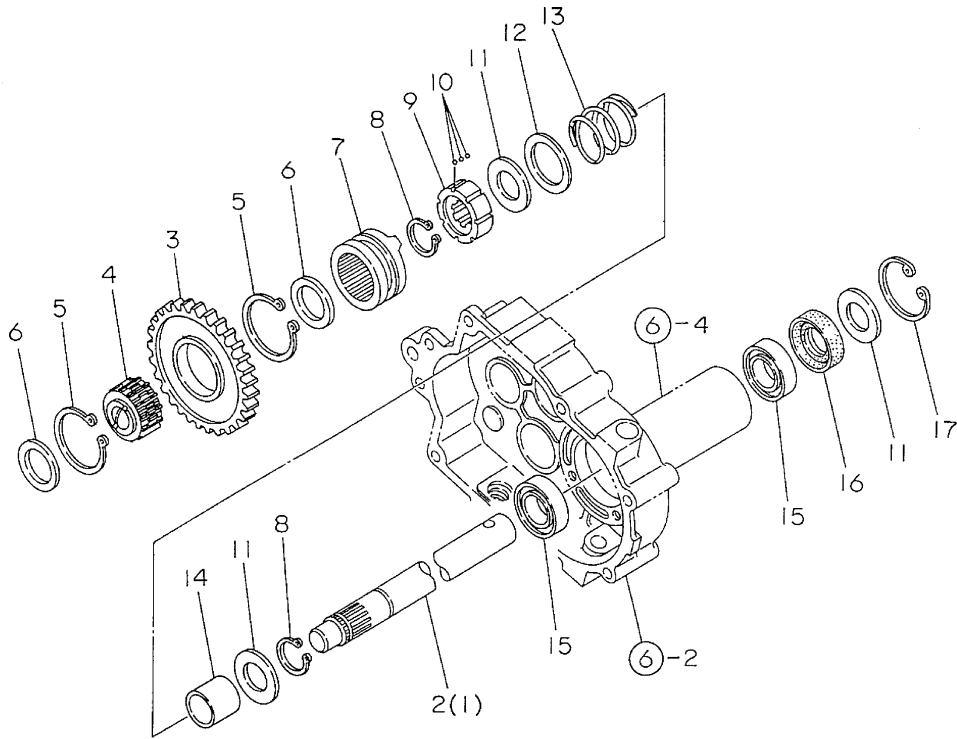


(A)=MCG95(-PQ(R
 (B)=MCG95(-PQ(MC
 (C)=

(D)=
 (E)=
 (F)=

No.	Lev.	Parts No.	Description	Q'ty						I	R
				(A)	(B)	(C)	(D)	(E)	(F)		
1	1	1N1291-25070	SHAFT COMP.,3RD	1							
2	1	1N1430-25060	GEAR 24/41T	1							
3	1	24101-062034	BEARING, BALL 6203	2							
4	1	22242-000170	RING, 17	1							
5	1	1N1430-25090	COLLAR	3							
6	1	1N1291-25080	BUSH 1715	1							

Fig.10. AXLE



(A)=MCG95(-PQ(R)
 (B)=MCG95(-PQ(MC)
 (C)=

(D)=
 (E)=
 (F)=

No.	Lev.	Parts No.	Description	Qty						I	R
				(A)	(B)	(C)	(D)	(E)	(F)		
1	1	1N1291-25090	AXLE	1							
2	1	1N3500-25020	AXLE	1							
3	1	1N1291-25100	GEAR 44	1							
4	1	1N1291-25110	GEAR 28,CLUTCH	1							
5	1	22242-000500	RING, 50	2							
6	1	1N1291-25120	PLATE,BALL SUPPORTG	2							
7	1	1N1291-25134	GEAR 28,SIDE CLUTCH	2							
8	1	22242-000250	RING, 25	4							
9	1	1N1291-25140	BOSS,DRIVE	2							
10	1	1N1291-25150	BALL 4,STEEL	42							
11	1	1N1291-25200	COVER,OIL SEAL	6							
12	1	1N1291-25170	LINER 2.0X35.5X50	2							
13	1	1N1291-25180	SPRING,CLUTCH	2							
14	1	1N1291-25190	COLLAR 25.2X31.8X27.	2							
15	1	24101-060054	BEARING, BALL 6005	4							
16	1	24421-254708	SEAL, OIL TC254708	2							
17	1	22252-000470	RING, 47	2							

Fig.11. BRAKE

(A)=MCG95(-PQ(R)
 (B)=MCG95(-PQ(MC)
 (C)=

(D)=
 (E)=
 (F)=

No.	Lev.	Parts No.	Description	Q'ty						I	R
				(A)	(B)	(C)	(D)	(E)	(F)		
1	1	1N1296-25040	MOUNT,BRAKE	1							
2	1	26557-060162	SCREW M 6X 16	4							
3	1	22217-060000	WASHER, SPRING 6	4							
4	1	1N1291-25220	DRUM,BRAKE	1							
5	1	22242-000140	RING, 14	1							
6	1	1N1291-25230	PACKING,BRAKE PLATE	1							
7	1	1N1291-25240	PLATE COMP.,BRAKE	1							
8	1	1N1291-25250	SHOE,BRAKE	2							
9	1	1N1291-25260	SPRING,BRAKE SHOE	2							
10	1	26016-060124	BOLT 6X12 W/L.W.	3							

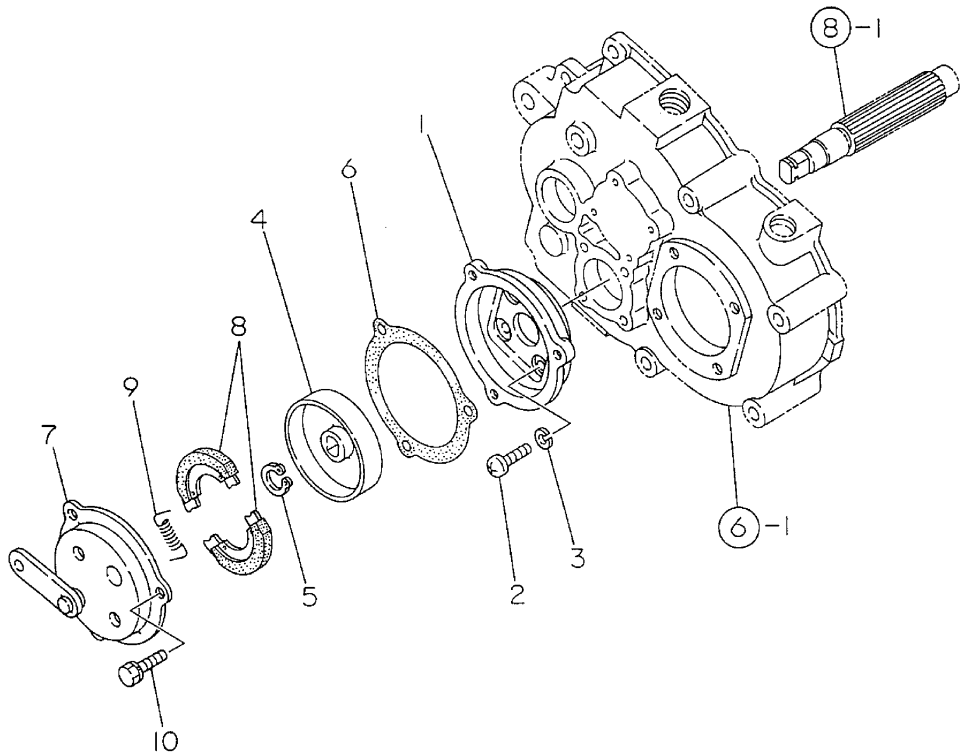
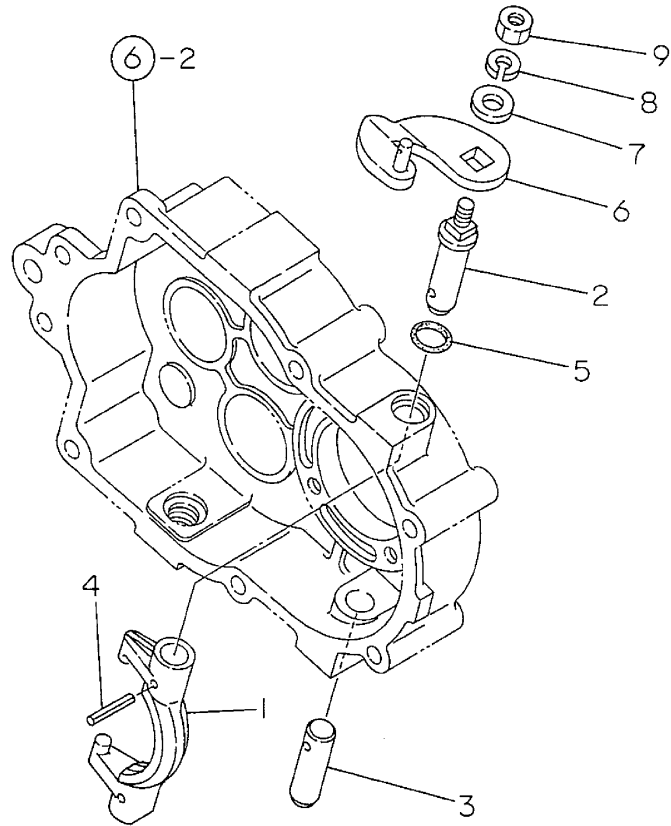


Fig.12. SIDE CLUTCH

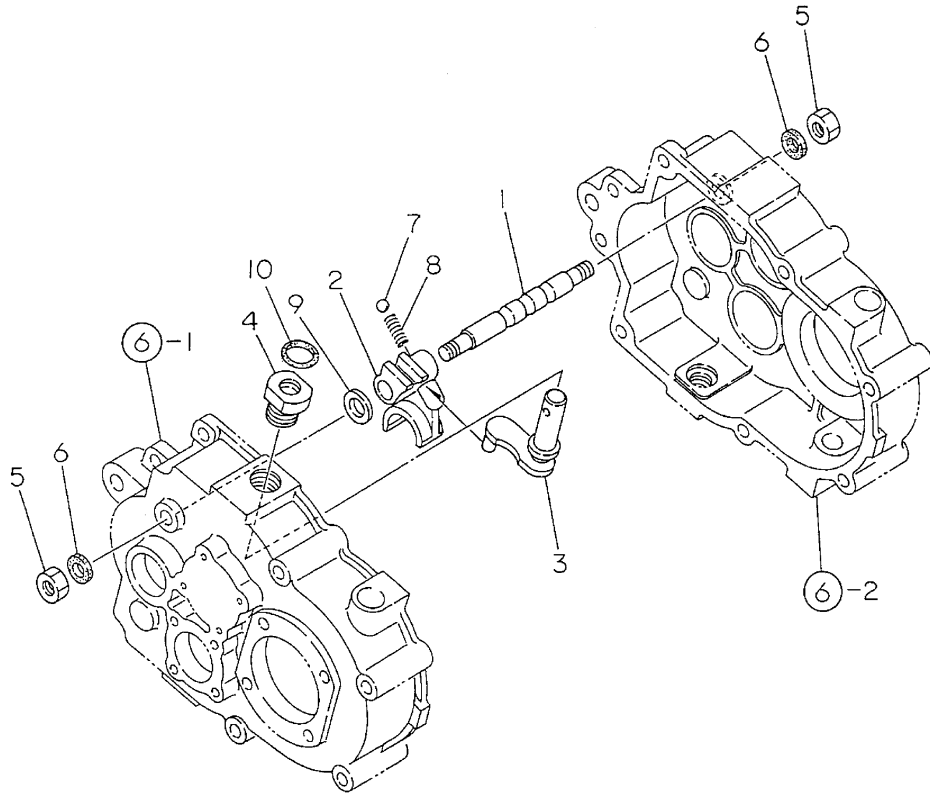


(A)=MCG95(-PQ(R
 (B)=MCG95(-PQ(MC
 (C)=

(D)=
 (E)=
 (F)=

No.	Lev.	Parts No.	Description	Q'ty						I	R
				(A)	(B)	(C)	(D)	(E)	(F)		
1	1	1N1296-25050	SHIFTER,SIDE CLUTCH	2							
2	1	1N1296-25060	PIN,SHIFT LEVER UPPR	2							
3	1	1N1296-25070	PIN,SHIFT LEVER LOWR	2							
4	1	22351-050025	PIN, SPRING 5.0X25	4							
5	1	24311-000140	O-RING, 1AP14.0	2							
6	1	1N1291-25300	LEVER,SIDE CLUTCH	2							
6-1	1	1N1291-25301	SIDE CLUTCH LEVER	2							S
		(A=F026135)									
7	1	22137-080000	WASHER, 8	2							
8	1	22217-080000	WASHER, SPRING 8	2							
9	1	26717-080002	NUT, M8	2							

Fig.13. MAIN CHANGE

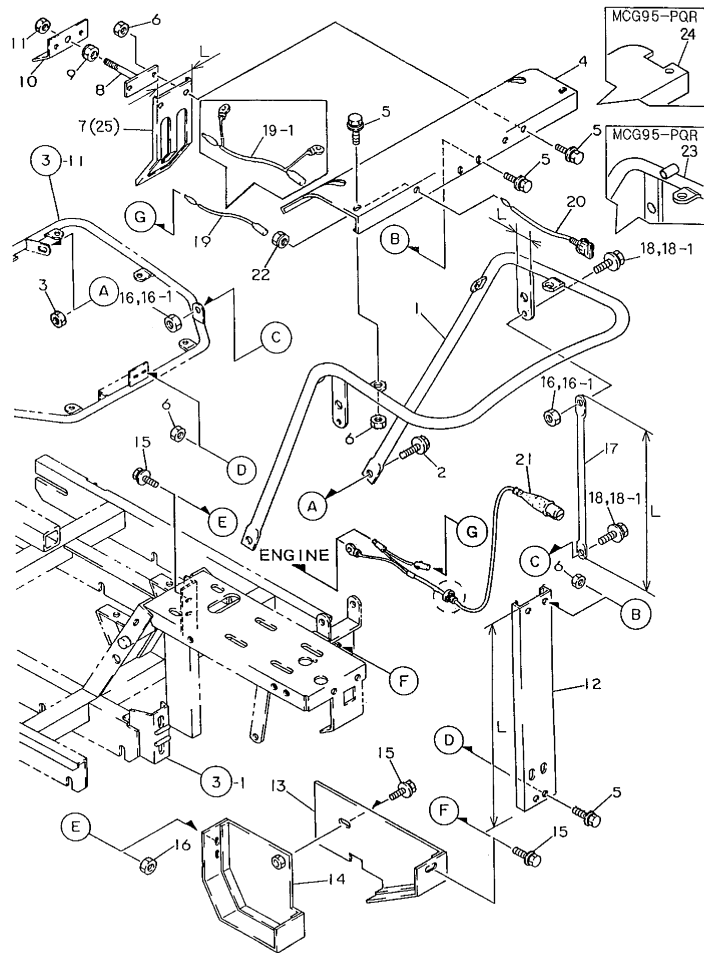


(A)=MCG95(-PQ(R)
 (B)=MCG95(-PQ(MC)
 (C)=

(D)=
 (E)=
 (F)=

No.	Lev.	Parts No.	Description	Qty						I	R
				(A)	(B)	(C)	(D)	(E)	(F)		
1	1	1N1291-26000	ROD,SHIFTER	1							
2	1	1N1291-26010	SHIFTER,GEAR	1							
3	1	1N1291-26020	LEVER,SHIFT	1							
4	1	1N1291-26030	GUIDE,SHIFT LEVER	1							
5	1	26717-100002	NUT, M10	2							
6	1	1N1430-26030	WASHER,SEAL	2							
7	1	1N1150-25010	BALL 8,STEEL	1							
8	1	1N1291-26040	SPRING,FORK	1							
9	1	1N1291-26050	LINER 2.3X22X13.5	1							
10	1	24311-000140	O-RING, 1AP14.0	1							W
(A=F015946)											

Fig.14. HANDLE



Remarks

- (1)EXCLUSIVE PARTS FOR MCG95-PQ
- (2)EXCLUSIVE PARTS FOR MCG95-PQR
- (3)REF.NO.1 HAS L=32 MM WHILE REF. NO.1-1 HAS L=38 MM.
- (4)REF.NO.17 HAS L=355 MM WHILE REF. NO.17-1 HAS 346 MM.
- * REF.NO.21 IS PROVIDED WITH CIRCLE-MARKED PARTS WHILE REF.NO.21-1 IS NOT PROVIDED WITH CIRCLE-MARKED.
- (5)REF.NO.7 HAS L=79 MM WHILE REF. NO.7-1 HAS L=85 MM.

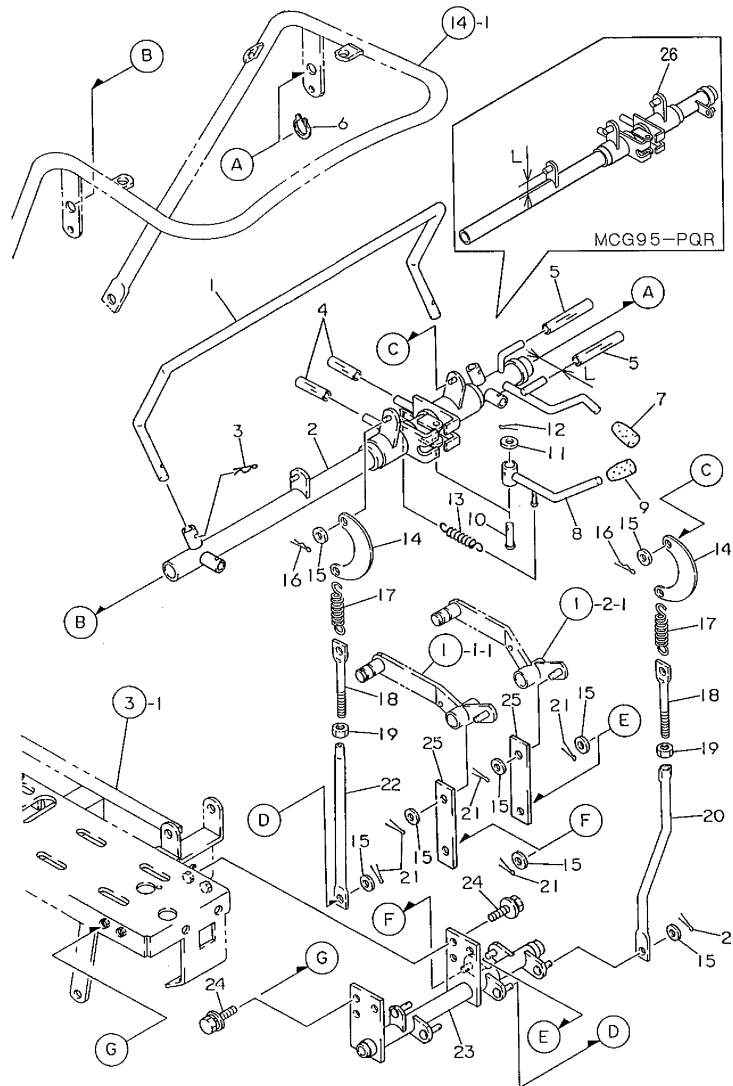
(A)=MCG95(-PQ(R)
(B)=MCG95(-PQ(MC)
(C)=

(D)=
(E)=
(F)=

No.	Lev.	Parts No.	Description	Q'ty						I	R
				(A)	(B)	(C)	(D)	(E)	(F)		
1	1	1N3500-47000	HANDLE A	1							
1-1	1	1N3500-47001	HANDLE A	1							S 3
(A=F011099)											
1-2	1	1N3500-47001-1	HANDLE A	1							S
(A=F019673)											
2	1	26018-100254	BOLT M10X 25	2	2						
3	1	26367-100002	NUT, M10	2	2						
4	1	1N3500-58000	PANEL	1							
5	1	1N1291-58080	BOLT 6X16 W/P&SW.	10	10						
6	1	26367-060002	NUT, M6	10	10						
7	1	1N3500-58010	PRATE A,GUIDE	1							
7-1	1	1N3500-58011	PRATE A,GUIDE	1							S 5
(A=F020257)											
8	1	1N3500-42080	STOPPER A	1	1						
9	1	26051-100002	NUT, M10	1	1						
10	1	1N3500-42100	STOPPER C	1	1						
11	1	26757-100002	NUT, LOCK M10	1	1						
12	1	1N3500-58140	STAY,HANDLE	1							
12-1	1	1N3500-58141	STAY,HANDLE	1	1						S 6
(A=F012447)											
13	1	1N3500-58080	COVER A,UNDER	1	1						
14	1	1N3500-58110	COVER D,UNDER	1	1						
15	1	26018-080204	BOLT M 8X 20	4	4						
16	1	26367-080002	NUT, M8	4							
16-1	1	26367-080002	NUT, M8	6	6						K
(A=F018557)											
17	1	1N3500-47020	STAY	1							
17-1	1	1N3501-47030	STAY	1							S 4
(A=F011099)											
17-2	1	1N3501-47030	STAY	2	2						K
(A=F018557)											
18	1	26018-080254	BOLT M 8X 25	2							
18-1	1	26018-080254	BOLT M 8X 25	4	4						K
(A=F018557)											
19	1	1N1150-52000	WIRE 550,STOP LEAD	1							1
19-1	1	1N3501-52000	WIRE, LEAD	1							S
(A=F019547)											
19-2	1	1N3501-52001	WIRE A,LEAD	1							N
(A=FXXXXXXX)											
20	1	1A1470-40900	SWITCH,STOP	1	1						1
21	1	1N1291-51030	SWITCH,SAFETY	1							1
21-1	1	1N1291-51031	SWITCH,SAFETY	1							S 1
(A=F012411)											
22	1	26051-080002	NUT, M8	1	1						
23	1	1N3500-47080	HANDLE 1	1							2
23-1	1	1N3500-47081	HANDLE 1	1	1						S 2
(A=F026285)											
24	1	1N3500-58270	PANEL A,CONTROL	1							2
24-1	1	1N3500-58271	PANEL A, CONTROL	1	1						S 2
(A=F026285)											
25	1	1N3500-58240	BOARD,GUIDE 1	1	1						2

N:Old $\begin{matrix} \leftarrow \text{Yes} \\ \text{No} \end{matrix}$ New, Q:Old $\begin{matrix} \leftarrow \text{No} \\ \text{Yes} \end{matrix}$ New, R:Old $\begin{matrix} \leftarrow \text{Yes} \\ \text{Yes} \end{matrix}$ New, S:Old $\begin{matrix} \leftarrow \text{No} \\ \text{No} \end{matrix}$ New, W:Add, Z:Discontinued, F:Interchangeable by set, K:Q'ty Change

Fig.15. TRAVEL LEVER



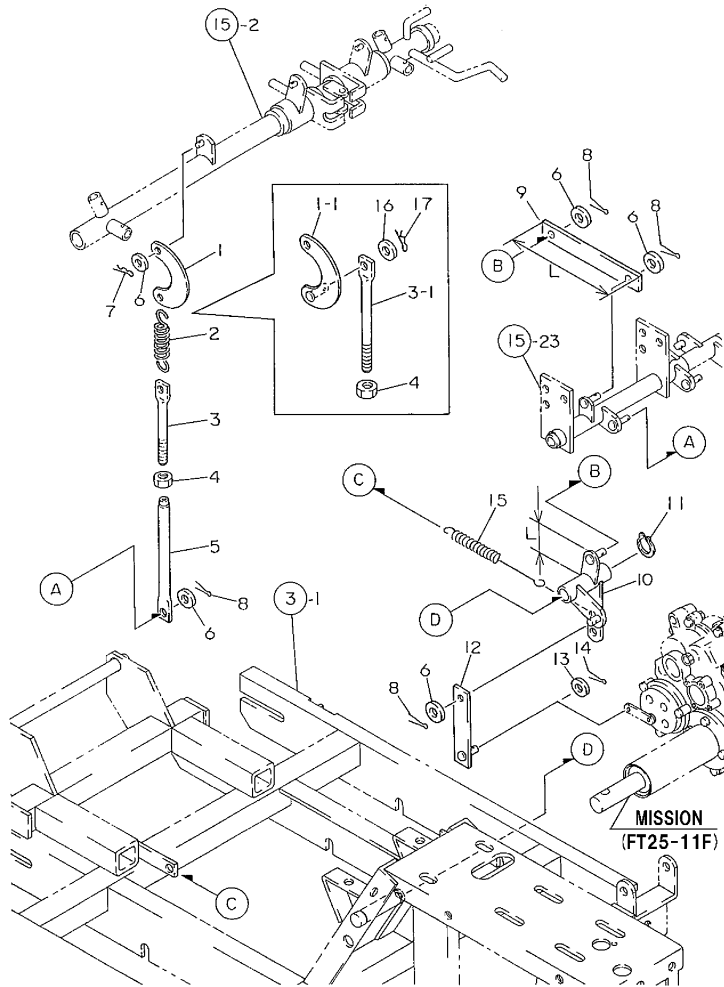
Remarks
 (1)EXCLUSIVE PART FOR MCG95-PQR
 (2)REF.NO.2 L=25 MM WHILE REF.
 NO.2-1 HAS L=29 MM.
 (3)REF. NO.3 L=30 MM WHILE REF.
 NO.3-1 HAS L=37 MM.

(A)=MCG95(-PQ(R
 (B)=MCG95(-PQ(MC
 (C)=

(D)=
 (E)=
 (F)=

No.	Lev.	Parts No.	Description	Q'ty						I	R
				(A)	(B)	(C)	(D)	(E)	(F)		
1	1	1N3500-42040	LEVER,CLUTCH BRAKE	1							
2	1	1N3500-42000	LEVER, OPERATION	1							
2-1	1	1N3500-42001	LEVER, OPERATION	1						S	2
(A=F011099)											
3	1	22360-160000	PIN, SNAP 16	2							
4	1	1N1240-47130	HOSE,VINYL	2	2						
5	1	1N1277-42270	HOSE,VINYL	2	2						
6	1	22242-000250	RING, 25	1	1						
7	1	1N3500-44000	GRIP,RED	1							
8	1	1N3500-42050	LEVER A,SUB-CHANGE	1	1						
9	1	1N1216-44010	GRIP	1	1						
10	1	1N3500-42070	PIN	1	1						
11	1	22137-100000	WASHER, 10	1	1						
12	1	22417-250250	PIN, COTTER 2.5X25	1	1						
13	1	1N1151-53000	SPRING 12.5X54,TENS.	1	1						
14	1	1N1240-42050	LINK,CRESCENT	2	2						
15	1	22137-080000	WASHER, 8	8	8						
16	1	22360-080000	SNAP PIN 8	2	2						
17	1	1N1210-53030	SPRING 21.5X78,TENS.	2	2						
18	1	1N1360-22090	SCREW 8X94,ADJUST	2	2						
19	1	26757-080002	NUT, LOCK M8	2	2						
20	1	1N1297-42260	ROD	1	1						
21	1	22417-250200	PIN, COTTER 2.5X20	6	6						
22	1	1N1362-42110	ROD A,CLUTCH	1	1						
23	1	1N3500-42111	LINK,CLUTCH BRAKE	1	1						
24	1	26018-080204	BOLT M 8X 20	4	4						
25	1	1N1220-42040	BRAKE E	2	2						
26	1	1N3500-42200	LEVER (A	1							1
26-1	1	1N3500-42201	LEVER A,CONTROL	1	1					S	3
(A=F019909)											

Fig.16. BRAKE LEVER

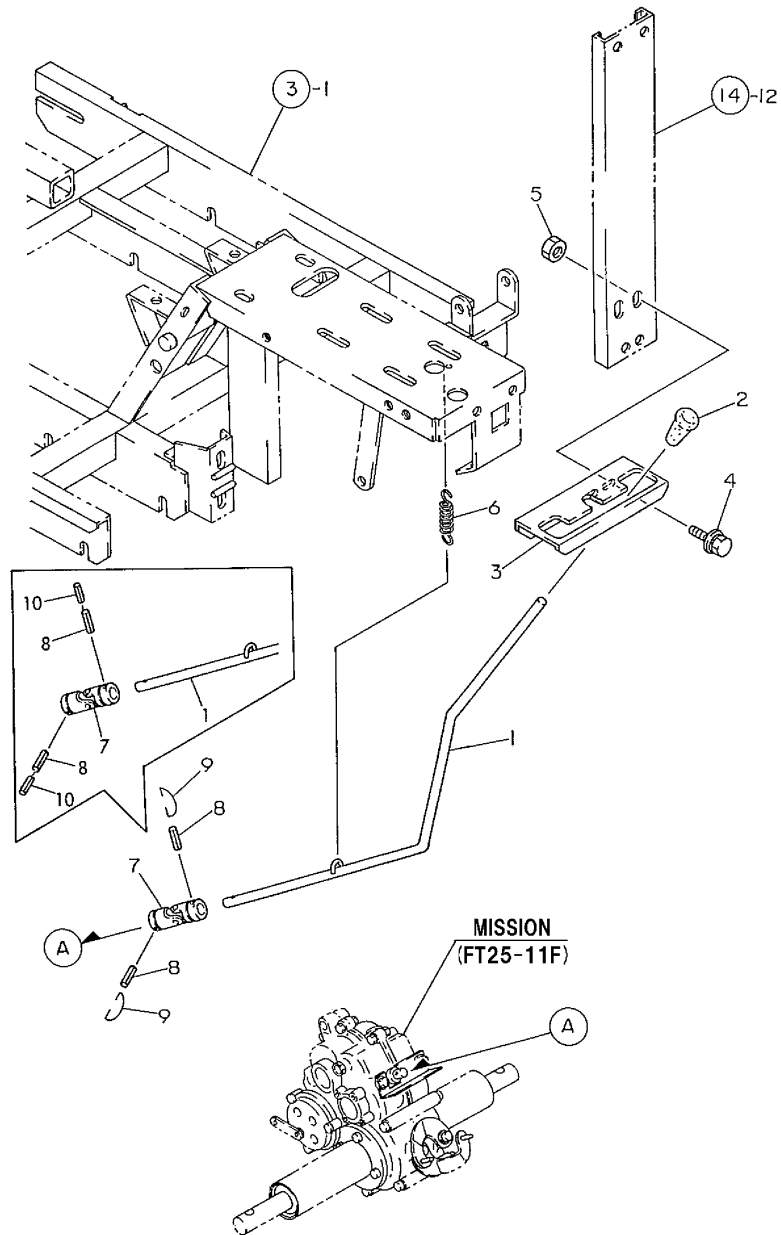


No.	Lev.	Parts No.	Description	Q'ty						I	R
				(A)	(B)	(C)	(D)	(E)	(F)		
1	1	1N1240-42050	LINK,CRESCENT	1							
1-1	1	1N1360-22130	LINK,CRESCENT	1	1						S
(A=F010299)											
2	1	1N1210-53030	SPRING 21.5X78,TENS.	1							Z
(A=F010299)											
3	1	1N1360-22090	SCREW 8X94,ADJUST	1							
3-1	1	1N1110-42001	ROD A,CLUTCH BRAKE	1	1						S
(A=F010299)											
4	1	26757-080002	NUT, LOCK M8	1	1						
5	1	1N1362-42110	ROD A,CLUTCH	1	1						
6	1	22137-080000	WASHER, 8	5	5						
7	1	22360-080000	SNAP PIN 8	1	1						
8	1	22417-250200	PIN, COTTER 2.5X20	4	4						
9	1	1N3500-42150	ROD C,BRAKE	1							
9-1	1	1N3500-42151	ROD C,BRAKE	1	1						S 1
(A=F019547)											
10	1	1N3500-42120	LINK,BRAKE	1							
10-1	1	1N3500-42121	LINK,BRAKE	1	1						S 2
(A=F019547)											
11	1	22242-000160	RING, 16	1	1						
12	1	1N3500-42130	RODE A,BRAKE	1	1						
13	1	22137-060000	WASHER, 6	1	1						
14	1	22417-200160	PIN, COTTER 2.0X16	1	1						
15	1	1N1293-53000	SPRING,BRAKE RETURN	1	1						
16	1	22137-080000	WASHER, 8	1	1						W
(A=F010299)											
17	1	22360-080000	SNAP PIN 8	1	1						W
(A=F010299)											

Remarks

- (1)REF. NO.9 L=394 MM WHILE REF. NO.9-1 HAS L=386 MM.
- (2)REF. NO.10 L=30 MM WHILE REF. NO.10-1 HAS L=40 MM.

Fig.17. MAIN CHANGE LEVER

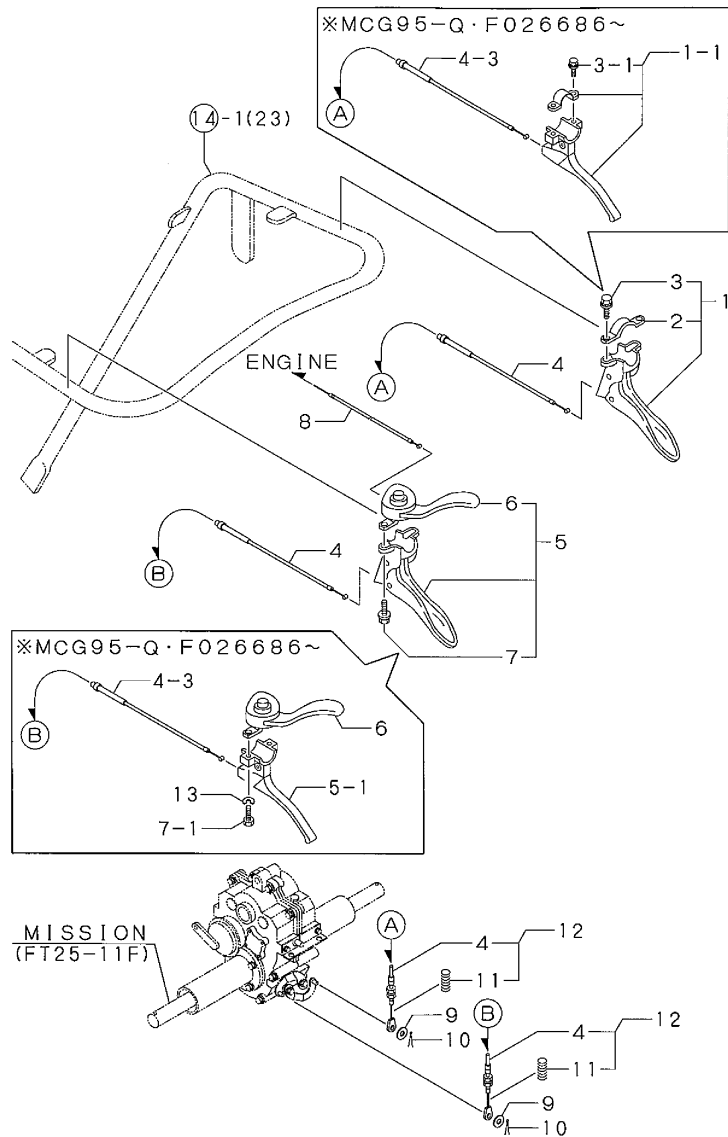


(A)=MCG95(-PQ(R)
 (B)=MCG95(-PQ(MC)
 (C)=

(D)=
 (E)=
 (F)=

No.	Lev.	Parts No.	Description	Q'ty						I	R
				(A)	(B)	(C)	(D)	(E)	(F)		
1	1	1N3500-41010	LEVER A,CHANGE	1	1						
2	1	1N1101-44010	GRIP 10,CLUTCH	1	1						
3	1	1N3500-41030	GUIDE A,CHANGE	1	1						
4	1	1N1291-58080	BOLT 6X16 W/P&SW.	2	2						
5	1	26367-060002	NUT, M6	2	2						
6	1	1N1366-53000	SPRING 12.5X34.5,TNS	1	1						
7	1	1N3500-41000	JOINT 12X14,UNIVERSL	1	1						
8	1	22351-050030	PIN, SPRING 5.0X30	2	2						
9	1	1N1185-41010	CIRCLIP,CHANGE	2							Z
		(A=F011720)									
10	1	22351-030030	PIN, SPRING 3.0X30	2	2						W
		(A=F011720)									

Fig.18. SIDE CLUTCH LEVER



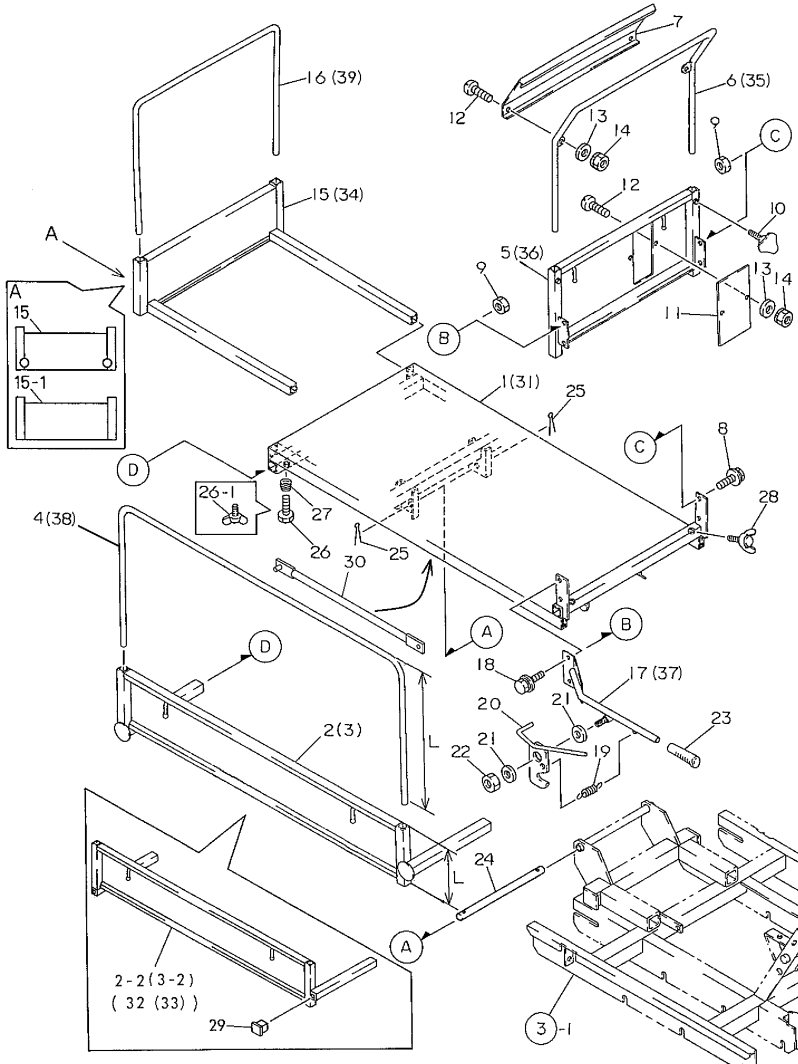
(A)=MCG95(-PQ(R
(B)=MCG95(-PQ(MC
(C)=

(D)=
(E)=
(F)=

No.	Lev.	Parts No.	Description	Q'ty						I	R
				(A)	(B)	(C)	(D)	(E)	(F)		
1	1	1E4490-51700	LEVER CMP.,SD.CLUTCH	1							
1-1	1	1E1140-51040 (A=F026686)	LEVER, SIDE CLUTCH	1	1						S
2	2	1N3500-51030 (A=F026686)	BAND 25.4	1							Z
3	2	26014-060259	BOLT, M6X 25	2							
3-1	2	26014-060309 (A=F026686)	BOLT, M6X 30	2	2						S
4	1	1N3500-51000	WIRE L,SIDE CLUTCH	2							1
4-1	1	1N3500-51001 (A=F026135)	WIRE,SIDE CLUTCH	2							N 1
4-2	1	1N3500-51002 (A=FXXXXXX)	WIRE,SIDE CLUTCH	2							N
4-3	1	1N3500-51003 (A=F026686)	WIRE,SIDE CLUTCH	2	2						S
5	1	1E4490-51730	LEVER R CMP,SD.CLTCH	1							
5-1	1	1N3500-51060 (A=F026686)	LEVER, SIDE CLUTCH	1	1						S
6	2	1E4490-51760	LEVER, ACCELERATOR	1	1						
7	2	26014-060259	BOLT, M6X 25	2							
7-1	1	1N3500-51070 (A=F026686)	SCREW, M6X35	2	2						S
8	1	1N1360-51000	WIRE,THROTTLE	1	1						
9	1	22137-060000	WASHER, 6	2	2						
10	1	22417-200160	PIN, COTTER 2.0X16	2	2						
11	1	1N1285-42160 (A=F012261)	SPRING 11X65,COMPRES	2							W 1
11-1	1	1N1285-42160 (A=FXXXXXX)	SPRING 11X65,COMPRES	2							Z
12	1	7N3500-51000	WIRE,SIDE	2							1
12-1	1	7N3500-51001 (A=F026135)	WIRE,SIDE	2							N 1
12-2	1	7N3500-51001 (A=FXXXXXX)	WIRE,SIDE	2							Z
13	1	1N3500-51080 (A=F026686)	WASHER, SPRING 6	2	2						W

Remarks
(1) REF. NO.12 IS NO.4 WITH NO.11 MOUNTED.

Fig.19. PLATFORM CARRIER



Remarks

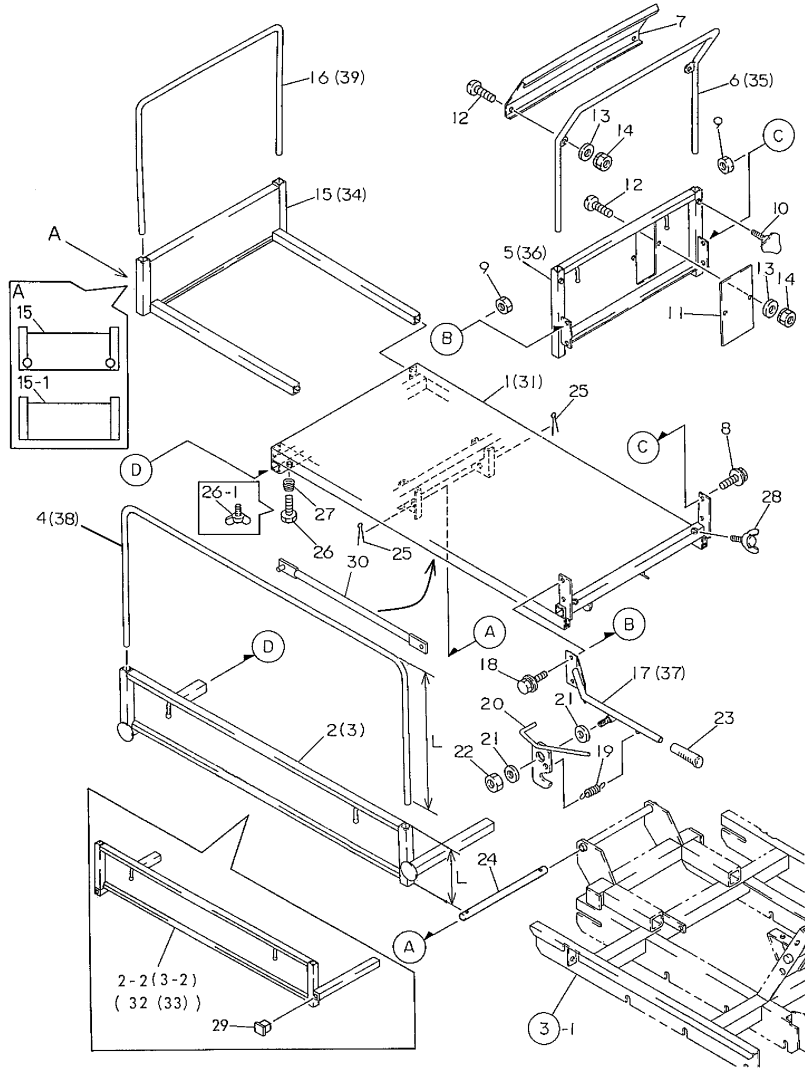
- (1)RFE. NO.2 HAS L=189 MM WHILE REF.
- NO.2-1 HAS L=169 MM.
- (2)REF. NO.3 HAS L=189 MM WHILE REF.
- NO.3-1 HAS L=169 MM.
- (3)REF. NO.4 HAS L=480 MM WHILE REF.
- NO.4-1 HAS L=430 MM.

(A)=MCG95(-PQ(R
(B)=MCG95(-PQ(MC
(C)=

(D)=
(E)=
(F)=

No.	Lev.	Parts No.	Description	Q'ty						I	R
				(A)	(B)	(C)	(D)	(E)	(F)		
1	1	1N3500-64000	CARRIER,PLATFORM	1							
2	1	1N3500-65000	PLATE L,SIDE	1							
2-1	1	1N3500-65001	PLATE L,SIDE	1							S 1
(A=F010699)											
2-2	1	1N3500-65002	PLATE L,SIDE	1							S
(A=F011356)											
3	1	1N3500-65010	BOARD R,SIDE	1							
3-1	1	1N3500-65011	BOARD R,SIDE	1							S 2
(A=F010699)											
3-2	1	1N3500-65012	SIDE PLATE R	1							S
(A=F011356)											
4	1	1N3500-65050	PIPE, GUIDE	2							
4-1	1	1N3500-65051-1	PIPE, GUIDE	2							S 3
(A=F010699)											
5	1	1N3500-66000	PLATE,BAKE	1							
6	1	1N1291-66280	PIPE,BACK	1							
7	1	1N1291-66260	PLATE C,BACK	1							
8	1	26018-080204	BOLT M 8X 20	2	2						
9	1	26367-080002	NUT, M8	4	4						
10	1	1N1091-58120	BOLT M8X25,WING	2							
11	1	1N3500-66030	PLATE C,BACK	1							
12	1	26557-060162	SCREW M 6X 16	4							
13	1	22137-060000	WASHER, 6	4							
14	1	26051-060002	NUT, M6	4							
15	1	1N1291-65240	PLATE,FRONT	1							
15-1	1	1N1291-65241	PLATE,FRONT	1							S
(A=F011356)											
16	1	1N1291-65220	PIPE F,GUIDE	1							
17	1	1N3500-64070	LEVER,DUNP	1							
18	1	26018-080254	BOLT M 8X 25	2	2						
19	1	1N1151-53000	SPRING 12.5X54,TENS.	1	1						
20	1	1N3500-64110	LEVER, LOCK	1	1						
21	1	22137-120000	WASHER, 12	2	2						
22	1	26347-120002	NUT, M12	1	1						
23	1	1N1101-44000	GRIP,SIDE CLUTCH	1	1						
24	1	1N1366-64250	PIN,FULCRUM	1	1						
25	1	22417-400300	PIN, COTTER 4.0X30	2	2						
26	1	1N1150-66090	BOLT,WING	4							
26-1	1	26647-100302	BOLT 10X30,WING	4	4						S
(A=F010699)											
27	1	1N1151-53020	SPRING 10.5X25,COMPR	4	4						
28	1	26647-100202	BOLT, WING M10X20	2	2						
29	1	1N1520-53020	PLUG 25J,SQUARE OIL	4	4						W
(A=F011356)											
30	1	1N3504-64000	BAR, BODY SUPPORT	1	1						W
(A=F026285)											
31	1	1N3500-64720	CARRIER	1							
32	1	1N3501-65090	PLATE L,SIDE	1							
33	1	1N3501-65080	PLATE R,SIDE	1							
34	1	1N3501-66150	PLATE,FRONT	1							
35	1	1N3501-66170	PIPE,BACK	1							

Fig.19. PLATFORM CARRIER



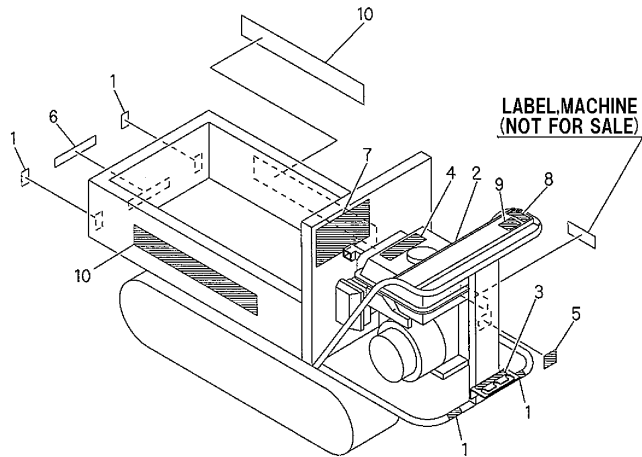
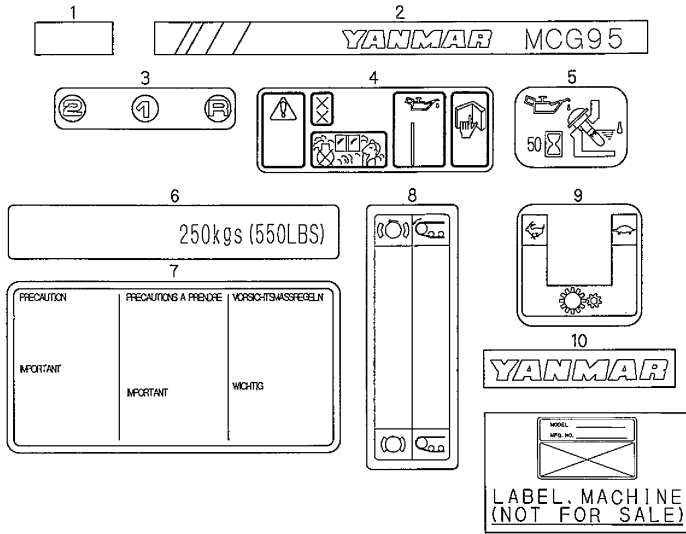
(A)=MCG95(-PQ(R)
 (B)=MCG95(-PQ(MC)
 (C)=
 (D)=
 (E)=
 (F)=

No.	Lev.	Parts No.	Description	Qty						I	R
				(A)	(B)	(C)	(D)	(E)	(F)		
36	1	1N3501-66180	PLATE, BACK		1						
37	1	1N3500-64730	LEVER, DUMP		1						
38	1	1N3500-65470	PIPE, GUIDE		2						
39	1	1N3500-66120	PIPE F, GUIDE		1						

Remarks

- (1) RFE. NO.2 HAS L=189 MM WHILE REF.
- NO.2-1 HAS L=169 MM.
- (2) REF. NO.3 HAS L=189 MM WHILE REF.
- NO.3-1 HAS L=169 MM.
- (3) REF. NO.4 HAS L=480 MM WHILE REF.
- NO.4-1 HAS L=430 MM.

Fig.20. LABELS



(A)=MCG95(-PQ(R)
 (B)=MCG95(-PQ(MC)
 (C)=

(D)=
 (E)=
 (F)=

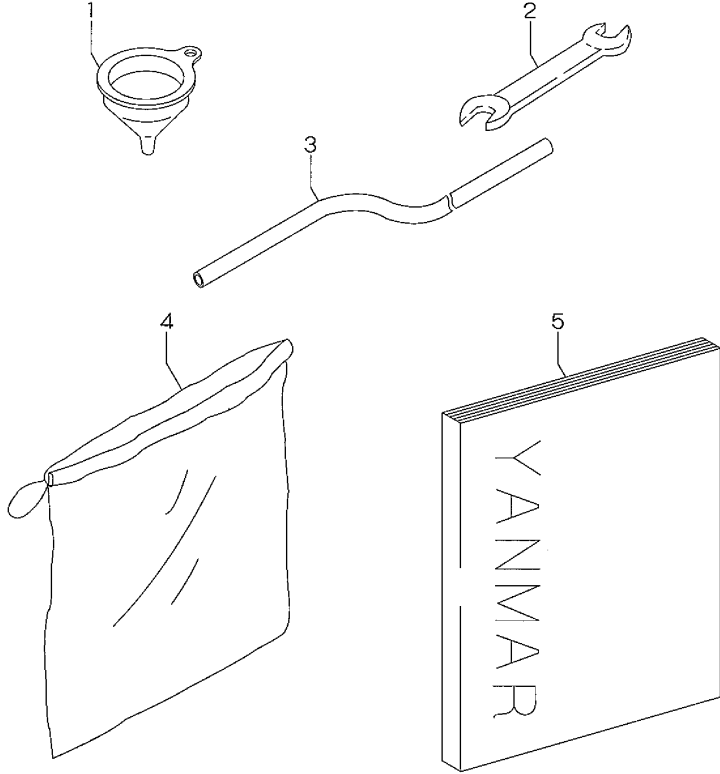
No.	Lev.	Parts No.	Description	Q'ty						I	R
				(A)	(B)	(C)	(D)	(E)	(F)		
1	1	1N1070-93050	TAPE, REFLECTIVE	4							
2	1	1N3500-93000	NAMER MCG95, MAIN	1							
3	1	1N3500-93040	LABEL, CHANGE	1							
4	1	1N1362-93060	LABEL, PQ-1	1							
5	1	1N3507-93160	LABEL, PQ-2	1							
6	1	1N3500-93160	LABEL, PQ-5	1							
7	1	1N1362-93140	LABEL, PQ-9	1							
8	1	1N1362-93250	LABEL, PQ-20	1							
9	1	1N3500-93180	LABEL, PQ-21	1							
10	1	1N1313-93030	NAMER, SIDE	2							

Remarks
 (1)GROUP NO.20 EXCLUSIVE PARTS
 FOR MCG-PQ

Fig.21. TOOLS & ACCESSORIES

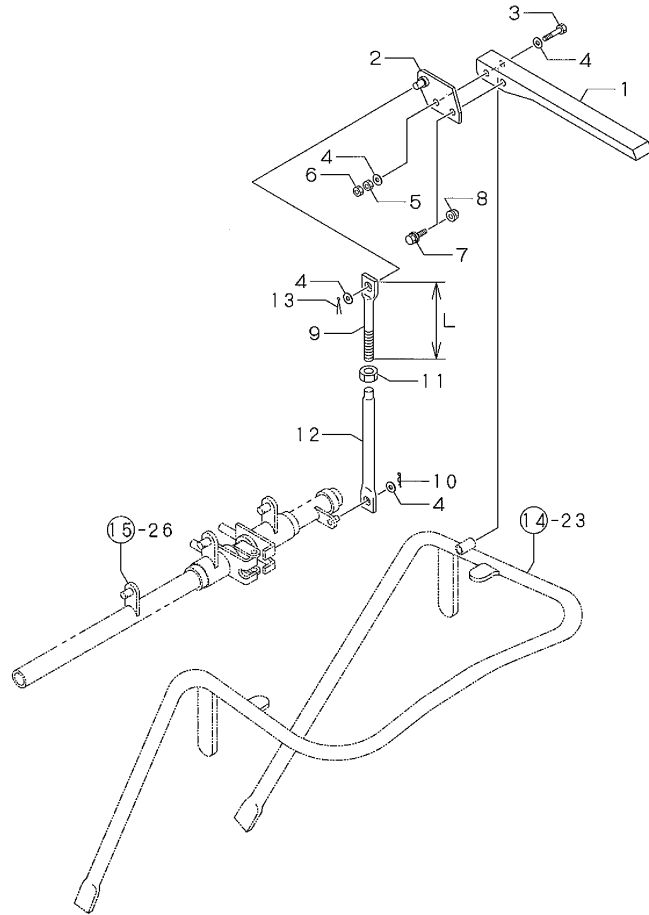
(A)=MCG95(-PQ(R
(B)=MCG95(-PQ(MC
(C)=

(D)=
(E)=
(F)=



No.	Lev.	Parts No.	Description	Q'ty						I	R
				(A)	(B)	(C)	(D)	(E)	(F)		
1	1	1N1070-91010 (A=F026135)	FUNNEL	1							Z
2	1	1N1070-91050 (A=F026135)	WRENCH 17X19	1							Z
3	1	1N1070-91020 (A=F026135)	HOSE	1							Z
4	1	1N1070-91090 (A=F026135)	BAG,TOOL	1							Z
5	1	1N3500-95100	OPERATION MANUAL	1							
5-1	1	1N3500-95101 (A=FXXXXXX)	OPERATION MANUAL	1	1						N

Fig.22. DEADMAN LEVER(ADD.ITEM



(A)=MCG95(-PQ(R
(B)=MCG95(-PQ(MC
(C)=

(D)=
(E)=
(F)=

No.	Lev.	Parts No.	Description	Q'ty						I	R
				(A)	(B)	(C)	(D)	(E)	(F)		
1	1	1N1723-31360	LEVER,DEADMAN	1	1						
2	1	1N3501-42100	BRACKET A ,LEVER	1	1						
3	1	26116-080552	BOLT, M8X 55 PLATED	1	1						
4	1	22137-080000	WASHER, 8	4	4						
5	1	26347-080002	NUT, M8	1	1						
6	1	26757-080002	NUT, LOCK M8	1	1						
7	1	26018-080204	BOLT M 8X 20	1	1						
8	1	26367-080002	NUT, M8	1	1						
9	1	1N1360-22090	SCREW 8X94,ADJUST	1							
9-1	1	1N3506-42160	SCREW M8X60,ADJUST	1	1					S	2
		(A=F020158)									
10	1	22360-080000	SNAP PIN 8	1	1						
11	1	26757-080002	NUT, LOCK M8	1	1						
12	1	1N1270-22132	ROD B,CLUTCH CONNECT	1	1						
13	1	22417-250200	PIN, COTTER 2.5X20	1	1						

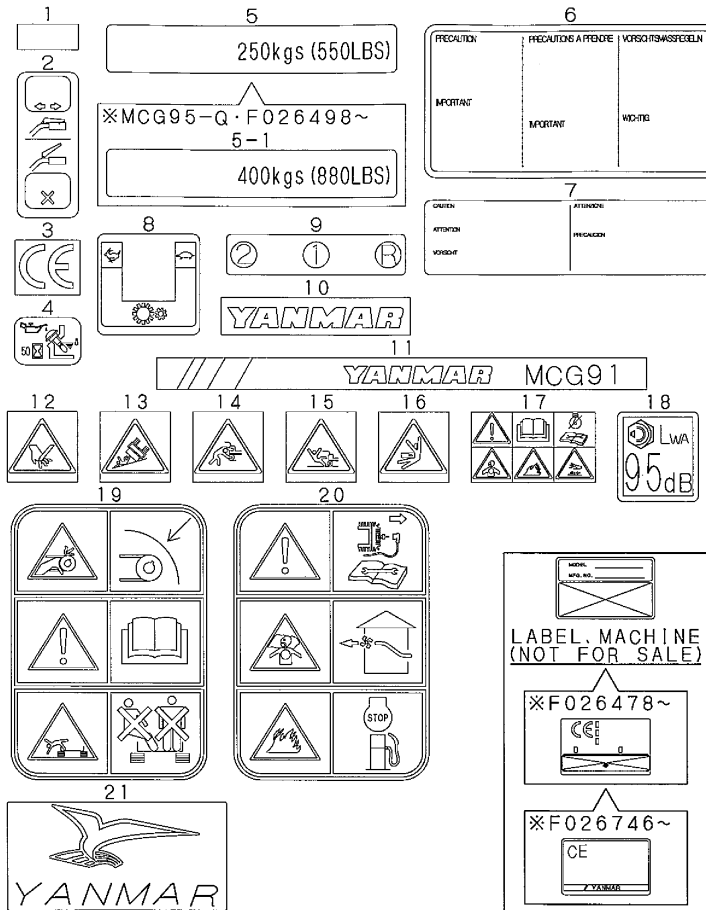
Remarks

(1)GROUP NO.22 EXCLUSIVE PARTS
FOR MCG95-PQR
(2)REF. NO.9 L=94 MM WHILE REF.
NO.9-1 HAS L=60 MM.

Fig.23. LABELS(ADD.ITEM

(A)=MCG95(-PQ(R
(B)=MCG95(-PQ(MC
(C)=

(D)=
(E)=
(F)=



No.	Lev.	Parts No.	Description	Q'ty						I	R
				(A)	(B)	(C)	(D)	(E)	(F)		
1	1	1N1070-93050 (A=FXXXXXX)	TAPE, REFLECTIVE	4							Z
2	1	1N3506-93260	LABEL, CLUTCH	1	1						
3	1	1N3507-93060 (A=F026478)	DECAL, HYD. CONTROL	1							Z
4	1	1N3507-93160	LEVEL, OIL	1	1						
5	1	1N3500-93160	LABEL	1							
5-1	1	1N1367-93120 (A=F026498)	LABEL, CARRY CAPACITY	1	1						S
6	1	1N1362-93140 (A=F025991)	LABEL, PQ-9	1							Z
7	1	1N3507-93090 (A=F025991)	DECAL, HYD. CONTROL	1							Z
8	1	1N3500-93180	LABEL, RANGE SHIFT	1	1						
9	1	1N3500-93040	LABEL, CHANGE	1	1						
10	1	1N1313-93030	NAMER, SIDE	2	2						
11	1	1N3500-93000	NAMER MCG95, MAIN	1	1						
12	1	1N3544-93310 (A=F022372)	LABEL	1							W
13	1	1N3544-93320 (A=F022372)	LABEL	1							W
14	1	1N3544-93330 (A=F022372)	LABEL	1							W
15	1	1N3544-93340 (A=F022372)	LABEL	1							W
16	1	1N3544-93350 (A=F022372)	LABEL	1							W
17	1	1N3544-93360 (A=F025991)	LABEL	1							W
18	1	1N3503-93310 (A=FXXXXXX)	LABEL 95DB, NOISE	1	1						W
19	1	1N3563-93020 (A=F026478)	LABEL, SAFETY	1	1						W
20	1	1N3563-93050 (A=F026478)	LABEL, SAFETY	1	1						W
21	1	1N3501-93170 (A=F026726)	MARK	1	1						W

Remarks
(1)GROUP NO.23 EXCLUSIVE PARTS FOR
MCG95-PQR

Parts No. Index

Parts No.	Fig. No.	Ref. No.
1A1470-40900	14	20
1E1140-51040	18	1 -1
1E4490-51700	18	1
1E4490-51730	18	5
1E4490-51760	18	6
1N1070-91010	21	1
1N1070-91020	21	3
1N1070-91050	21	2
1N1070-91090	21	4
1N1070-93050	20	1
	23	1
1N1091-36000	4	8
	5	8
1N1091-58120	19	10
1N1101-44000	19	23
1N1101-44010	17	2
1N1101-44040	3	2
1N1110-42001	16	3 -1
1N1150-25010	13	7
1N1150-52000	14	19
1N1150-66090	19	26
1N1151-53000	15	13
	19	19
1N1151-53020	19	27
1N1185-41010	17	9
1N1185-42120	2	19
1N1190-45000	1	10
1N1210-35100	5	14
1N1210-53030	15	17
	16	2
1N1216-44010	15	9
1N1220-42040	15	25
1N1240-21040	2	17
1N1240-42050	15	14
	16	1
1N1240-47130	15	4
1N1270-22080	2	10
1N1270-22132	22	12
1N1272-22110	2	7
1N1277-42270	15	5
1N1285-42160	18	11
		11 -1
1N1291-22020	2	8
1N1291-24030	6	6
1N1291-24040	6	7
1N1291-24070	6	6 -1
1N1291-25040	8	5
1N1291-25050	8	7
1N1291-25060	8	8
1N1291-25070	9	1

Parts No.	Fig. No.	Ref. No.
1N1291-25080	9	6
1N1291-25090	10	1
1N1291-25100	10	3
1N1291-25110	10	4
1N1291-25120	10	6
1N1291-25134	10	7
1N1291-25140	10	9
1N1291-25150	10	10
1N1291-25170	10	12
1N1291-25180	10	13
1N1291-25190	10	14
1N1291-25200	10	11
1N1291-25220	11	4
1N1291-25230	11	6
1N1291-25240	11	7
1N1291-25250	11	8
1N1291-25260	11	9
1N1291-25300	12	6
1N1291-25301	12	6 -1
1N1291-25310	7	1
1N1291-26000	13	1
1N1291-26010	13	2
1N1291-26020	13	3
1N1291-26030	13	4
1N1291-26040	13	8
1N1291-26050	13	9
1N1291-35000	5	10
1N1291-37000	4	10
1N1291-51030	14	21
1N1291-51031	14	21 -1
1N1291-58080	3	18
	14	5
	17	4
1N1291-65220	19	16
1N1291-65240	19	15
1N1291-65241	19	15 -1
1N1291-66260	19	7
1N1291-66280	19	6
1N1292-35000	4	3
1N1292-35010	4	4
	5	4
1N1292-36000	5	3
1N1293-53000	16	15
1N1296-24001	6	3
1N1296-24013	6	5
1N1296-24020	6	17
1N1296-25000	8	1
1N1296-25010	8	2
1N1296-25020	8	3
1N1296-25040	11	1

Parts No.	Fig. No.	Ref. No.
1N1296-25050	12	1
1N1296-25060	12	2
1N1296-25070	12	3
1N1296-35000	5	11
1N1297-21010	2	3
1N1297-42260	15	20
1N1313-93030	20	10
	23	10
1N1360-22090	15	18
	16	3
	22	9
1N1360-22130	16	1 -1
1N1360-51000	18	8
1N1362-42110	15	22
	16	5
1N1362-93060	20	4
1N1362-93140	20	7
	23	6
1N1362-93250	20	8
1N1366-53000	17	6
1N1366-64250	19	24
1N1367-93120	23	5 -1
1N1430-22070	1	6
1N1430-24000	6	16
1N1430-24080	6	8
1N1430-25060	9	2
1N1430-25090	7	5
	8	9
	9	5
1N1430-26030	13	6
1N1460-41040	1	7
1N1520-53020	19	29
1N1530-24230	6	7 -1
1N1550-54100	3	12
1N1723-31360	22	1
1N3500-21000	2	1
1N3500-21001	2	1 -1
1N3500-22000	2	4
1N3500-22010	2	6
1N3500-22020	2	9
1N3500-22030	1	1
1N3500-22031	1	1 -1
1N3500-22040	1	2
1N3500-22041	1	2 -1
1N3500-22090	2	7 -1
1N3500-24000	6	1
1N3500-24010	6	2
1N3500-24011	6	2 -1
1N3500-24020	6	4
1N3500-24030	6	20

Parts No.	Fig. No.	Ref. No.
1N3500-25000	7	2
1N3500-25010	8	4
1N3500-25020	10	2
1N3500-31000	3	1
1N3500-37000	4	12
1N3500-41000	17	7
1N3500-41010	17	1
1N3500-41030	17	3
1N3500-41040	3	9
1N3500-42000	15	2
1N3500-42001	15	2 -1
1N3500-42040	15	1
1N3500-42050	15	8
1N3500-42070	15	10
1N3500-42080	14	8
1N3500-42100	14	10
1N3500-42111	15	23
1N3500-42120	16	10
1N3500-42121	16	10 -1
1N3500-42130	16	12
1N3500-42150	16	9
1N3500-42151	16	9 -1
1N3500-42200	15	26
1N3500-42201	15	26 -1
1N3500-44000	15	7
1N3500-47000	14	1
1N3500-47001	14	1 -1
1N3500-47001-1	14	1 -2
1N3500-47020	14	17
1N3500-47080	14	23
1N3500-47081	14	23 -1
1N3500-51000	18	4
1N3500-51001	18	4 -1
1N3500-51002	18	4 -2
1N3500-51003	18	4 -3
1N3500-51030	18	2
1N3500-51060	18	5 -1
1N3500-51070	18	7 -1
1N3500-51080	18	13
1N3500-54000	3	11
1N3500-54001	3	11 -1
1N3500-54002	3	11 -2
1N3500-54070	3	16
1N3500-54080	3	17
1N3500-54090	3	15
1N3500-58000	14	4
1N3500-58010	14	7
1N3500-58011	14	7 -1
1N3500-58040	3	20
1N3500-58070	3	21

Parts No. Index

Parts No.	Fig. No.	Ref. No.
1N3500-58080	14	13
1N3500-58110	14	14
1N3500-58130	3	5
1N3500-58140	14	12
1N3500-58141	14	12 -1
1N3500-58160	3	6
1N3500-58161	3	6 -1
1N3500-58240	14	25
1N3500-58270	14	24
1N3500-58271	14	24 -1
1N3500-58530	3	5 -1
1N3500-64000	19	1
1N3500-64070	19	17
1N3500-64110	19	20
1N3500-64720	19	31
1N3500-64730	19	37
1N3500-65000	19	2
1N3500-65001	19	2 -1
1N3500-65002	19	2 -2
1N3500-65010	19	3
1N3500-65011	19	3 -1
1N3500-65012	19	3 -2
1N3500-65050	19	4
1N3500-65051-1	19	4 -1
1N3500-65470	19	38
1N3500-66000	19	5
1N3500-66030	19	11
1N3500-66120	19	39
1N3500-93000	20	2
	23	11
1N3500-93040	20	3
	23	9
1N3500-93160	20	6
	23	5
1N3500-93180	20	9
	23	8
1N3500-95100	21	5
1N3500-95101	21	5 -1
1N3501-35030	5	14 -1
1N3501-42100	22	2
1N3501-47030	14	17 -1
		17 -2
1N3501-52000	14	19 -1
1N3501-52001	14	19 -2
1N3501-65080	19	33
1N3501-65090	19	32
1N3501-66150	19	34
1N3501-66170	19	35
1N3501-66180	19	36
1N3501-93170	23	21

Parts No.	Fig. No.	Ref. No.
1N3503-93310	23	18
1N3504-64000	19	30
1N3506-42160	22	9 -1
1N3506-93260	23	2
1N3507-93060	23	3
1N3507-93090	23	7
1N3507-93160	20	5
	23	4
1N3544-93310	23	12
1N3544-93320	23	13
1N3544-93330	23	14
1N3544-93340	23	15
1N3544-93350	23	16
1N3544-93360	23	17
1N3563-93020	23	19
1N3563-93050	23	20
22137-060000	16	13
	18	9
	19	13
22137-080000	2	14
	6	10
	12	7
	15	15
	16	6
	22	4
22137-100000	3	13
	5	13
		18
	15	11
22137-120000	19	21
22137-160000	1	8
22217-060000	11	3
22217-080000	6	15
	12	8
22217-120000	6	19
22242-000140	11	5
22242-000150	1	4
22242-000160	1	9
	16	11
22242-000170	4	6
	5	6
	9	4
22242-000250	10	8
	15	6
22242-000500	10	5
22252-000350	1	3
22252-000470	10	17
22351-030030	17	10
22351-050025	12	4

Parts No.	Fig. No.	Ref. No.
22351-050030	17	8
22360-080000	15	16
	16	7
		17
	22	10
22360-160000	15	3
22417-200160	16	14
	18	10
22417-250200	15	21
	16	8
	22	13
22417-250250	5	12
	15	12
22417-400300	19	25
22550-050251	2	18
24101-060034	4	5
	5	5
	7	4
24101-060054	10	15
24101-062024	7	6
24101-062034	8	6
	9	3
24104-062024	1	5
24311-000140	12	5
	13	10
24421-173007	7	3
24421-173507	8	10
24421-173508	4	7
	5	7
24421-254708	10	16
25123-003101	2	2
26014-060259	18	3
		7
26014-060309	18	3 -1
26016-060124	11	10
26016-060164	2	16
26016-080204	6	14
26018-080164	2	5
	6	21
26018-080204	3	7
		22
	14	15
	15	24
	19	8
	22	7
26018-080254	2	11
	3	10
	14	18
		18 -1
	19	18

Parts No.	Fig. No.	Ref. No.
26018-100254	14	2
26051-060002	19	14
26051-080002	2	15
	14	22
26051-100002	3	4
		14
		14 -1
		14 -2
	5	19
	14	9
26051-120002	4	9
		11
	5	9
26052-100002	5	15
26106-080452	2	13 -1
26116-080452	2	13
26116-080552	22	3
26117-080302	6	13
26117-081102	6	9
26117-081202	6	12
26117-100254	3	3
26117-100702	5	17
26117-101902	3	15 -1
		15 -2
26347-080002	22	5
26347-120002	19	22
26367-060002	3	19
	14	6
	17	5
26367-080002	2	12
	3	8
		23
	14	16
		16 -1
	19	9
	22	8
26367-100002	14	3
26557-060162	11	2
	19	12
26647-100202	19	28
26647-100302	19	26 -1
26717-080002	6	11
	12	9
26717-100002	13	5
26717-120002	6	18
26757-080002	15	19
	16	4
	22	6
		11
26757-100002	5	16

Parts No. Index

Parts No.	Fig. No.	Ref. No.
26757-100002	14	11
7N1292-35000	4	2
7N1292-35010	4	1
7N1292-36000	5	2
7N1292-36010	5	1
7N3500-51000	18	12
7N3500-51001	18	12 -1
		12 -2

Parts No.	Fig. No.	Ref. No.
-----------	----------	----------

Parts No.	Fig. No.	Ref. No.
-----------	----------	----------

Parts No.	Fig. No.	Ref. No.
-----------	----------	----------